



POST MATCH SUMMARY REPORT

Korea DPR 5 - 1 Japan

Quarter-final - Match 46

01 November 2025

20:00 Kick Off

Olympic Stadium of Rabat



Match Summary - Teams



Korea DPR

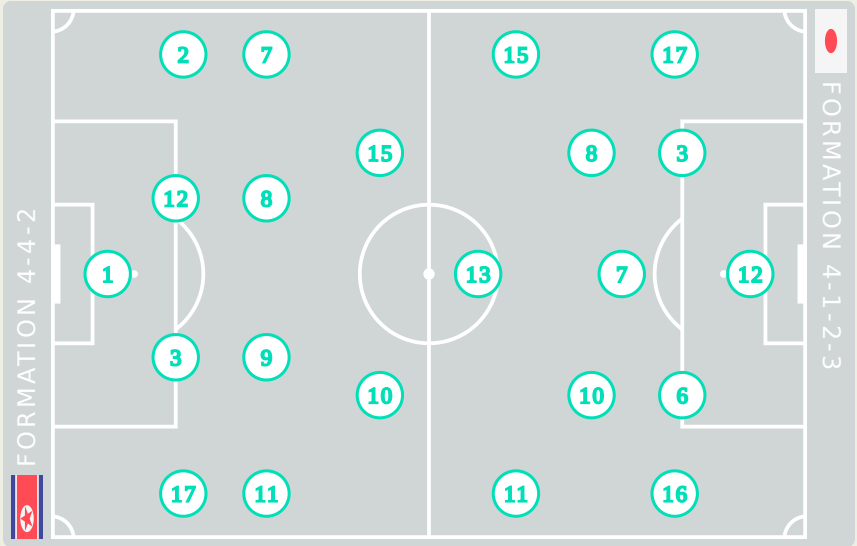
5

→

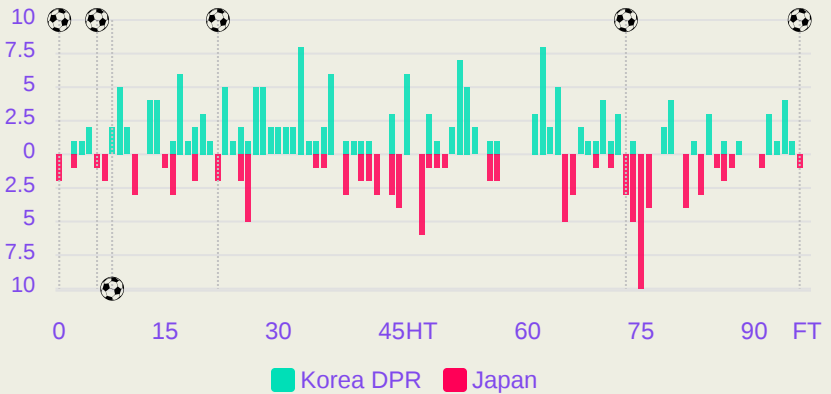
1

Japan





Distribution in the Final Third



STARTING

- 1 GK KIM Son Gyong
- 2 DF YUN Jin A
- 3 DF RI Jin A
- 7 MF RI Ui Gyong 6' 90+6'
- 8 MF EH Chong Gum
- 9 MF RI Kyong Im
- 10 FW YU Jong Hyang 22' 90+1'
- 11 MF PAK Rye Yong 90+4'
- 12 DF RYU Jin Ju
- 15 FW KIM Won Sim 1' 73' 81'
- 17 DF KIM Su Rim

SUBSTITUTES

- 18 GK KIM Su Jin
- 21 GK HONG Ryu Mi
- 4 DF OH Jin Sim
- 5 DF KIM Yon A
- 6 MF PAK Su Rim 90+4'
- 13 DF RI Hyo Yang
- 14 DF PAK Kum Mi
- 16 FW RI Ye Rim 81'
- 19 FW KIM Sun Nyo
- 20 MF PAEK So Hyang 90+1'

STARTING

- Rena YAMAUCHI GK 12
- Yuna AOKI DF 3
- 79' 12' Ema MATSUOKA DF 6
- Honoka SUNAGA MF 7
- 8' Konoha NAKAMURA FW 8
- Noa FUKUSHIMA MF 10
- 79' Yuna TAKAHASHI MF 11
- 45' Ua ONO FW 13
- 90+1' Niko SHIKIDA MF 15
- 64' Mone SATO DF 16
- Kelly NEREI DF 17

SUBSTITUTES

- Kaho KUMAZAWA GK 1
- Asuka SEKIGUCHI GK 21
- Yuna MIYAZAKI DF 2
- 90+1' Momoka SANO MF 4
- 64' Mihiro FURUKAWA DF 5
- 45' Nanami TAIRA FW 9
- Iro SATO MF 14
- Shizuru IIDA MF 18
- 79' Ena KOIZUMI DF 19
- 79' Manami SATO FW 20

Match Summary - Key Statistics



Korea DPR

5

1

Japan



| Possession | | |
|------------|-------------------------------------------------------|-----------|
| Total | <div><div>37%</div><div>15%</div><div>48%</div></div> | Total |
| 5 | Goals | 1 |
| 24 (9) | Attempts at Goal (On Target) | 6 (3) |
| 355 (251) | Total Passes (Complete) | 468 (336) |
| 71 % | Pass Completion % | 72 % |
| 81 | Completed Line Breaks | 76 |
| 12 | Defensive Line Breaks | 1 |
| 139 | Receptions in the Final Third | 70 |
| 24 | Crosses | 5 |
| 18 | Ball Progressions | 35 |
| 225 (54) | Defensive Pressures Applied (Direct Pressures) | 182 (55) |
| 67 | Forced Turnovers | 60 |
| 109 | Second Balls | 102 |
| 106.5 km | Total Distance Covered | 105.6 km |
| 4.6 km | Zone 4 - Low Speed Sprinting: 19-23 km/h | 4.5 km |



Korea DPR

Phases of Play

Japan

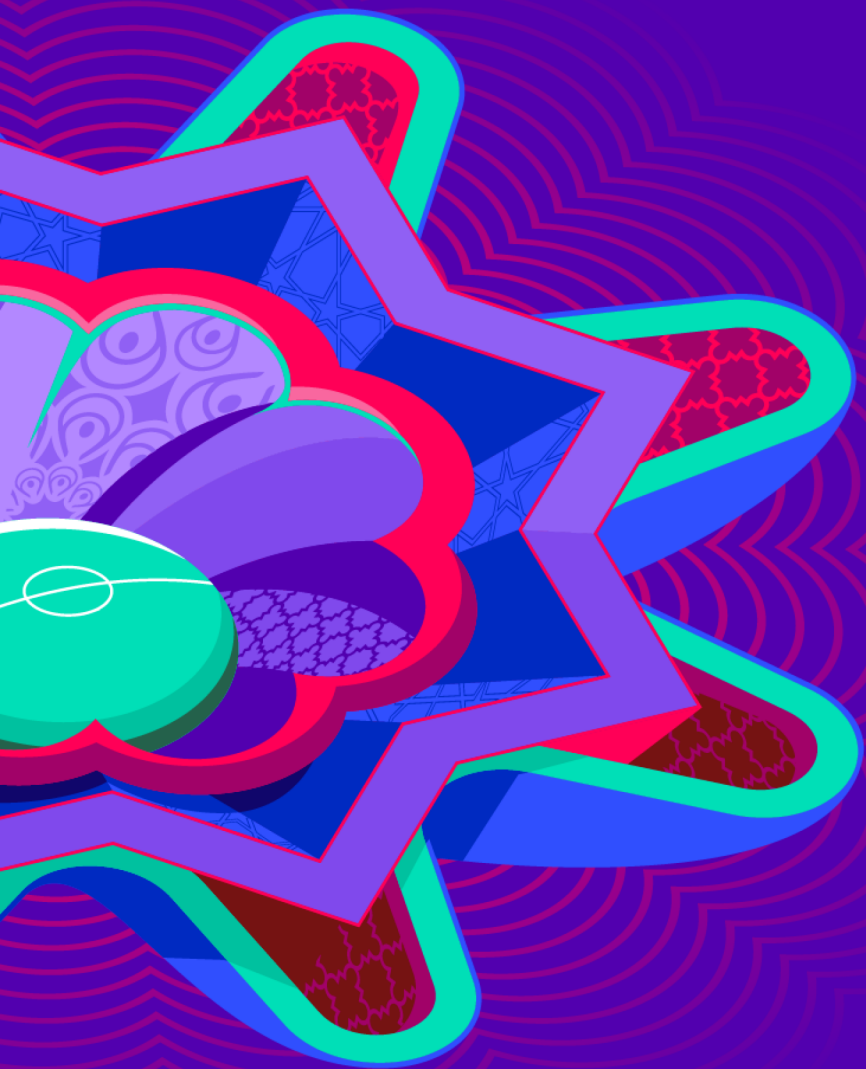


IN POSSESSION



OUT OF POSSESSION

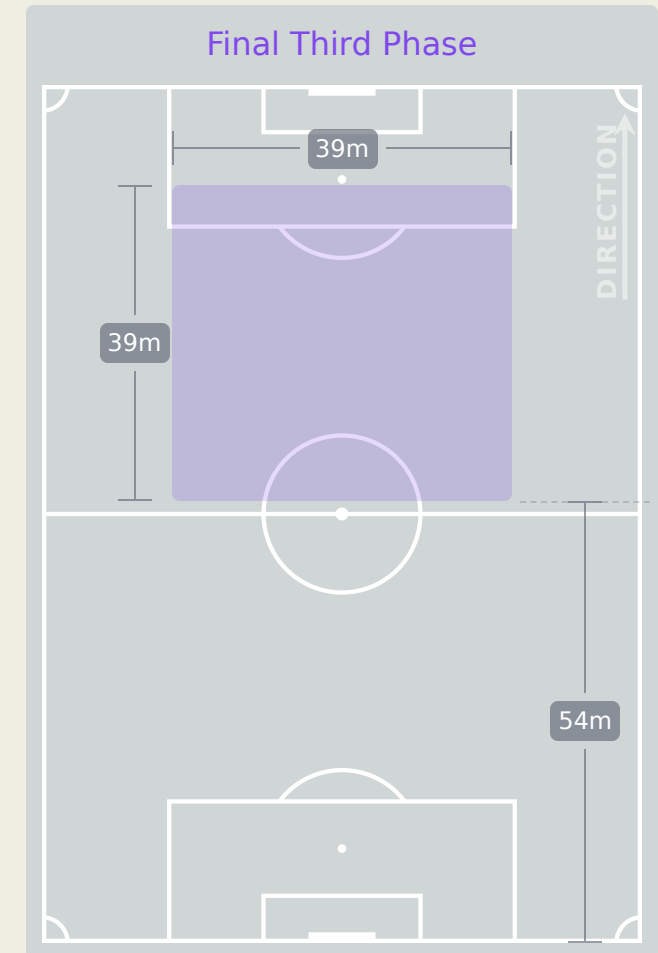
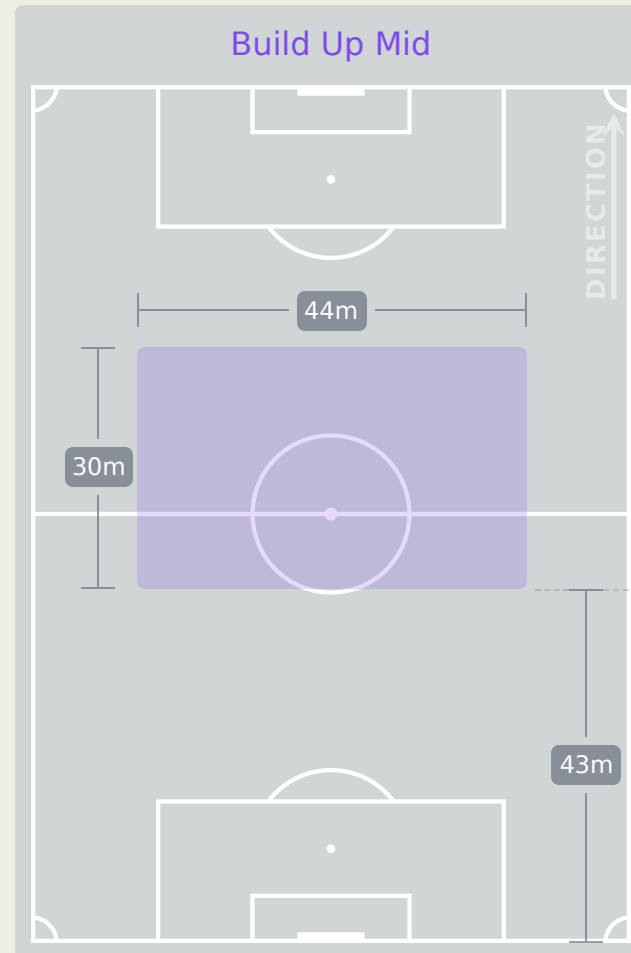
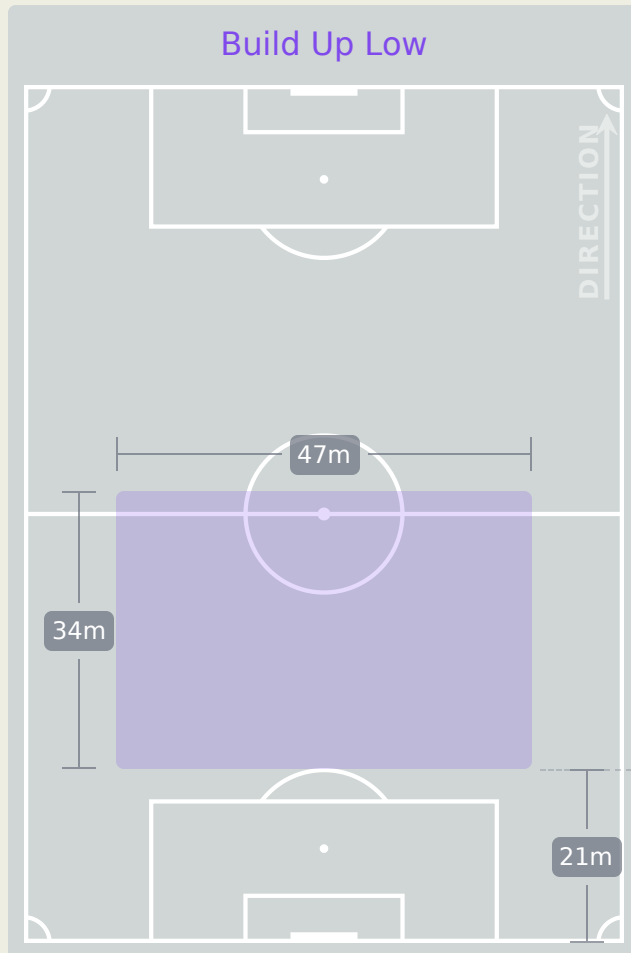




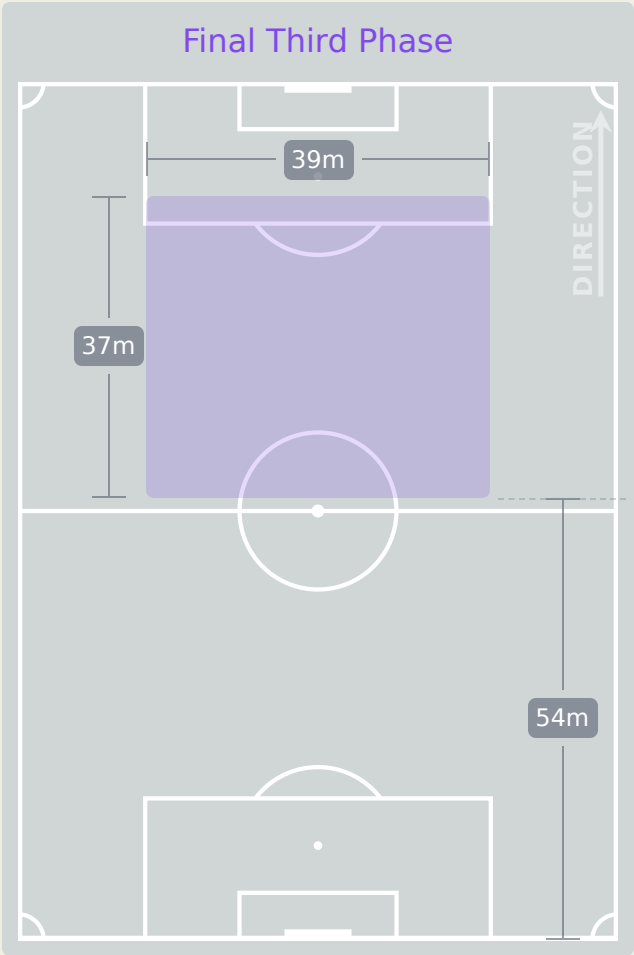
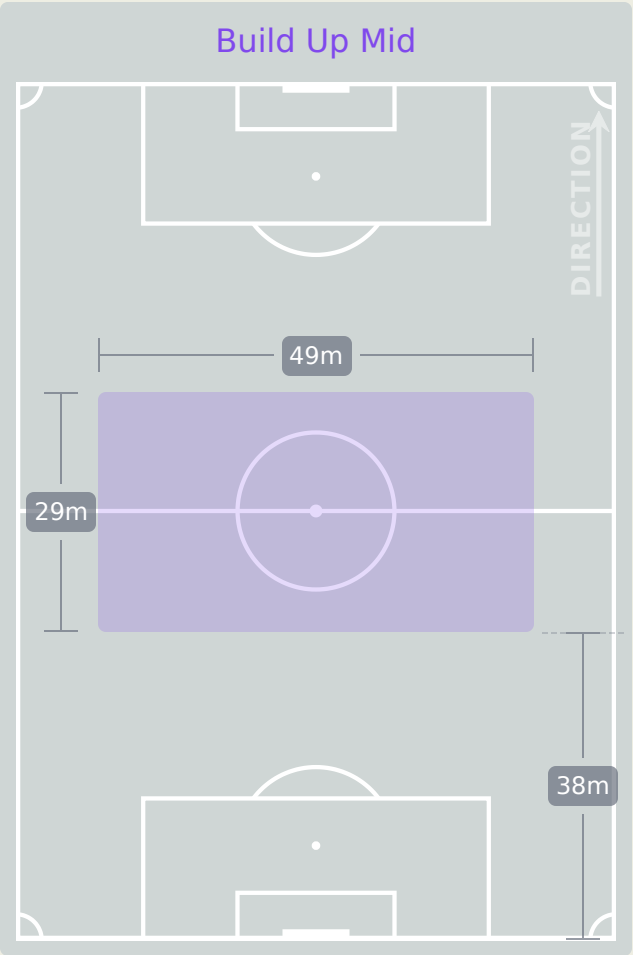
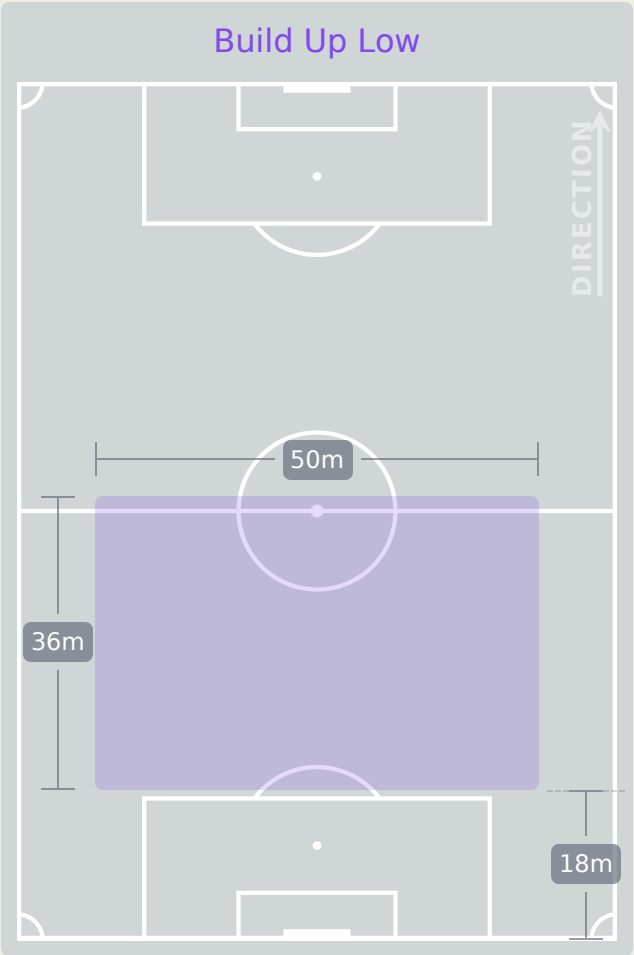
IN POSSESSION

Korea DPR 5 - 1 Japan

In Possession Line Height & Team Length



In Possession Line Height & Team Length



Line Breaks



Attempted Line Breaks

143

33 Attempted

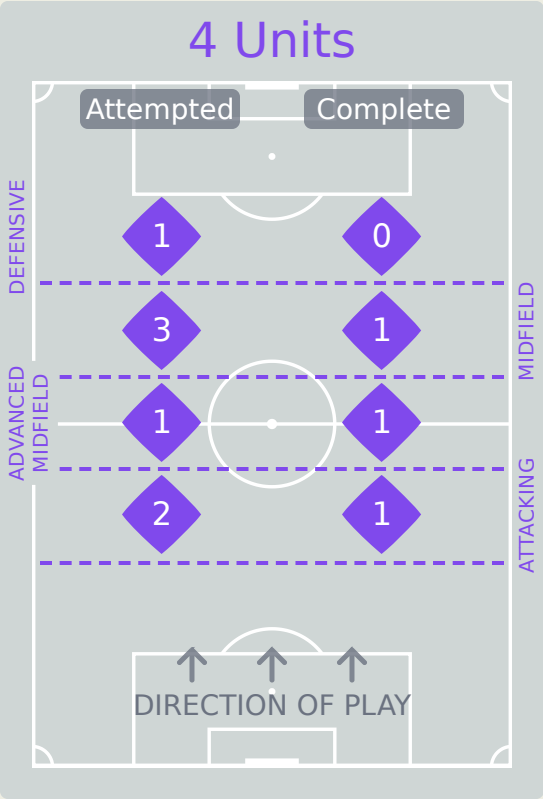
22 Complete

32 Attempted

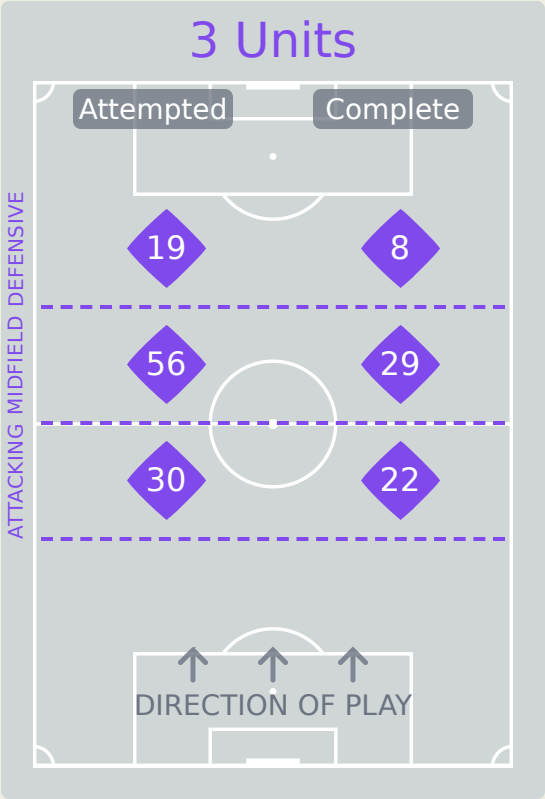
24 Complete

78 Attempted

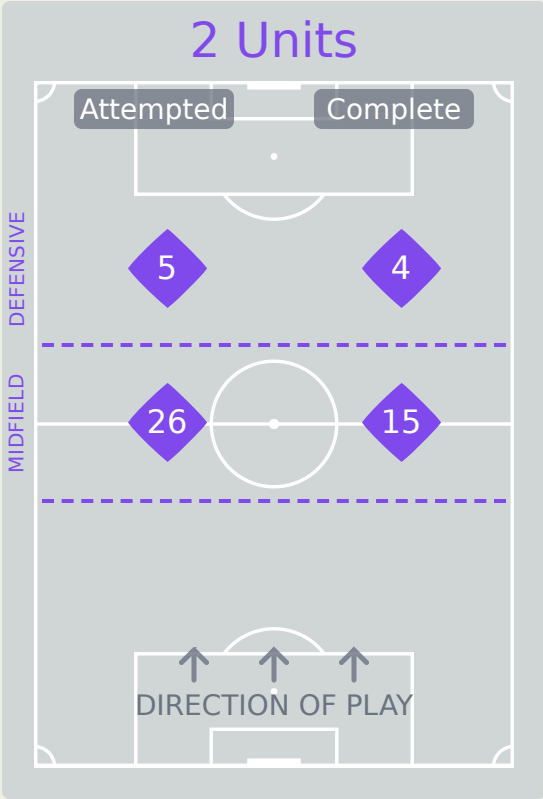
35 Complete



| | |
|-----------------------|---|
| Attempted Line Breaks | 7 |
| Inside Shape | 5 |
| Outside Shape | 2 |



| | |
|-----------------------|-----|
| Attempted Line Breaks | 105 |
| Inside Shape | 67 |
| Outside Shape | 38 |



| | |
|-----------------------|----|
| Attempted Line Breaks | 31 |
| Inside Shape | 22 |
| Outside Shape | 9 |

Line Breaks



Attempted Line Breaks

162

57 Attempted

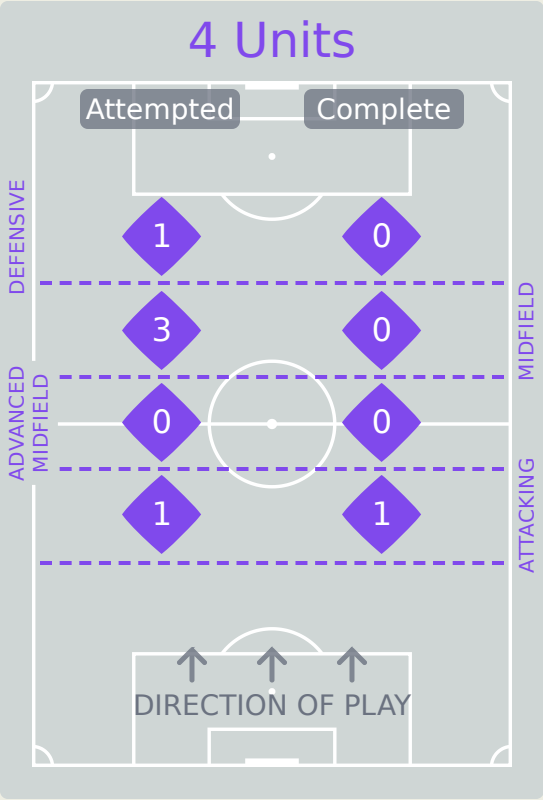
41 Complete

37 Attempted

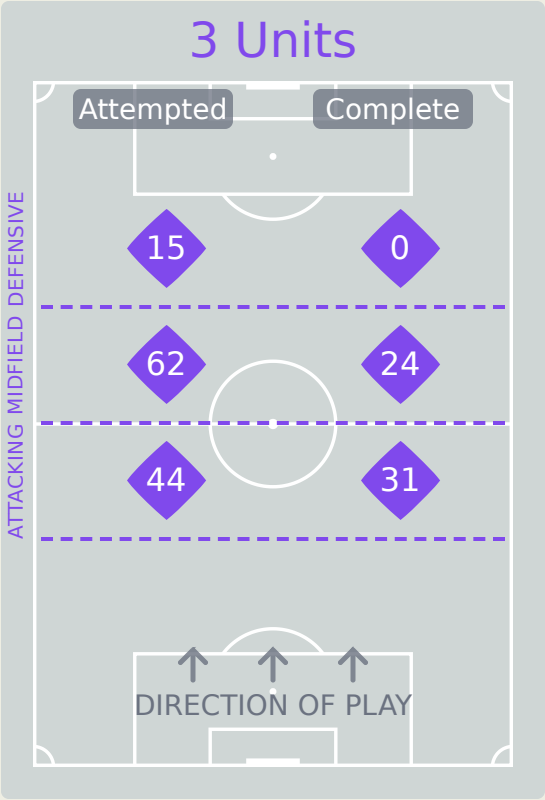
24 Complete

68 Attempted

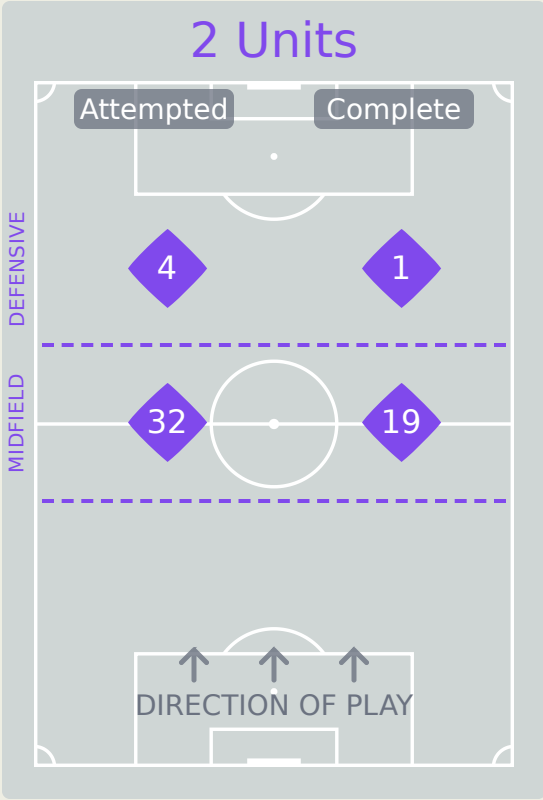
11 Complete



| | |
|-----------------------|---|
| Attempted Line Breaks | 5 |
| Inside Shape | 4 |
| Outside Shape | 1 |



| | |
|-----------------------|-----|
| Attempted Line Breaks | 121 |
| Inside Shape | 98 |
| Outside Shape | 23 |



| | |
|-----------------------|----|
| Attempted Line Breaks | 36 |
| Inside Shape | 33 |
| Outside Shape | 3 |

Line Breaks



| | | | | | 4 Units | | | | 3 Units | | | 2 Units | | Direction | | | Distribution Type | | |
|----|---------------|-----------------------|-----------------------|-------------------------|----------------|-------------------------|---------------|----------------|----------------|---------------|----------------|---------------|----------------|-----------|--------|------|-------------------|-------|------------------|
| # | Player | Line Breaks Attempted | Line Breaks Completed | Line Break Completion % | Attacking Line | Attacking Midfield Line | Midfield Line | Defensive Line | Attacking Line | Midfield Line | Defensive Line | Midfield Line | Defensive Line | Through | Around | Over | Pass | Cross | Ball Progression |
| 1 | KIM Son Gyong | 17 | 9 | 53% | 0 | 0 | 1 | 0 | 6 | 7 | 2 | 1 | 0 | 0 | 0 | 17 | 17 | 0 | 0 |
| 2 | YUN Jin A | 19 | 8 | 42% | 2 | 0 | 0 | 0 | 5 | 7 | 1 | 4 | 0 | 4 | 4 | 11 | 18 | 1 | 0 |
| 3 | RI Jin A | 11 | 5 | 45% | 0 | 0 | 1 | 0 | 2 | 7 | 1 | 0 | 0 | 2 | 0 | 9 | 11 | 0 | 0 |
| 7 | RI Ui Gyong | 19 | 13 | 68% | 0 | 1 | 1 | 0 | 1 | 4 | 5 | 4 | 3 | 4 | 8 | 7 | 14 | 2 | 3 |
| 8 | EH Chong Gum | 17 | 9 | 53% | 0 | 0 | 0 | 0 | 4 | 5 | 2 | 5 | 1 | 7 | 3 | 7 | 17 | 0 | 0 |
| 9 | RI Kyong Im | 18 | 6 | 33% | 0 | 0 | 0 | 1 | 2 | 6 | 3 | 6 | 0 | 5 | 1 | 12 | 17 | 1 | 0 |
| 10 | YU Jong Hyang | 5 | 2 | 40% | 0 | 0 | 0 | 0 | 0 | 3 | 2 | 0 | 0 | 2 | 1 | 2 | 5 | 0 | 0 |
| 11 | PAK Rye Yong | 5 | 3 | 60% | 0 | 0 | 0 | 0 | 1 | 3 | 0 | 0 | 1 | 3 | 2 | 0 | 4 | 0 | 1 |
| 12 | RYU Jin Ju | 9 | 7 | 78% | 0 | 0 | 0 | 0 | 3 | 2 | 0 | 4 | 0 | 3 | 3 | 3 | 9 | 0 | 0 |
| 15 | KIM Won Sim | 6 | 5 | 83% | 0 | 0 | 0 | 0 | 0 | 4 | 1 | 1 | 0 | 3 | 2 | 1 | 5 | 0 | 1 |
| 17 | KIM Su Rim | 16 | 14 | 88% | 0 | 0 | 0 | 0 | 6 | 7 | 2 | 1 | 0 | 0 | 7 | 9 | 14 | 2 | 0 |
| 6 | PAK Su Rim | 0 | 0 | 0% | 0 | 0 | 0 | 0 | 0 | 0 | 0 | 0 | 0 | 0 | 0 | 0 | 0 | 0 | 0 |
| 16 | RI Ye Rim | 0 | 0 | 0% | 0 | 0 | 0 | 0 | 0 | 0 | 0 | 0 | 0 | 0 | 0 | 0 | 0 | 0 | 0 |
| 20 | PAEK So Hyang | 1 | 0 | 0% | 0 | 0 | 0 | 0 | 0 | 1 | 0 | 0 | 0 | 0 | 1 | 0 | 0 | 0 | 1 |

Line Breaks



| | | | | | 4 Units | | | | 3 Units | | | 2 Units | | Direction | | | Distribution Type | | |
|----|-----------------|-----------------------|-----------------------|-------------------------|----------------|-------------------------|---------------|----------------|----------------|---------------|----------------|---------------|----------------|-----------|--------|------|-------------------|-------|------------------|
| # | Player | Line Breaks Attempted | Line Breaks Completed | Line Break Completion % | Attacking Line | Attacking Midfield Line | Midfield Line | Defensive Line | Attacking Line | Midfield Line | Defensive Line | Midfield Line | Defensive Line | Through | Around | Over | Pass | Cross | Ball Progression |
| 12 | Rena YAMAUCHI | 9 | 4 | 44% | 0 | 0 | 0 | 0 | 6 | 1 | 0 | 2 | 0 | 1 | 1 | 7 | 9 | 0 | 0 |
| 3 | Yuna AOKI | 37 | 16 | 43% | 1 | 0 | 0 | 1 | 13 | 11 | 1 | 10 | 0 | 13 | 4 | 20 | 37 | 0 | 0 |
| 6 | Ema MATSUOKA | 10 | 6 | 60% | 0 | 0 | 0 | 0 | 6 | 3 | 0 | 1 | 0 | 4 | 5 | 1 | 10 | 0 | 0 |
| 7 | Honoka SUNAGA | 19 | 10 | 53% | 0 | 0 | 2 | 0 | 2 | 7 | 2 | 4 | 2 | 10 | 4 | 5 | 19 | 0 | 0 |
| 8 | Konoha NAKAMURA | 12 | 6 | 50% | 0 | 0 | 0 | 0 | 1 | 6 | 2 | 3 | 0 | 5 | 3 | 4 | 11 | 0 | 1 |
| 10 | Noa FUKUSHIMA | 12 | 7 | 58% | 0 | 0 | 0 | 0 | 0 | 8 | 1 | 2 | 1 | 7 | 2 | 3 | 11 | 0 | 1 |
| 11 | Yuna TAKAHASHI | 11 | 7 | 64% | 0 | 0 | 0 | 0 | 1 | 6 | 1 | 3 | 0 | 5 | 3 | 3 | 9 | 1 | 1 |
| 13 | Ua ONO | 2 | 0 | 0% | 0 | 0 | 0 | 0 | 0 | 1 | 1 | 0 | 0 | 1 | 0 | 1 | 2 | 0 | 0 |
| 15 | Niko SHIKIDA | 4 | 1 | 25% | 0 | 0 | 0 | 0 | 1 | 2 | 1 | 0 | 0 | 1 | 3 | 0 | 2 | 0 | 2 |
| 16 | Mone SATO | 12 | 4 | 33% | 0 | 0 | 0 | 0 | 4 | 4 | 2 | 2 | 0 | 2 | 4 | 6 | 12 | 0 | 0 |
| 17 | Kelly NEREI | 22 | 8 | 36% | 0 | 0 | 1 | 0 | 6 | 9 | 3 | 3 | 0 | 3 | 3 | 16 | 21 | 1 | 0 |
| 4 | Momoka SANO | 0 | 0 | 0% | 0 | 0 | 0 | 0 | 0 | 0 | 0 | 0 | 0 | 0 | 0 | 0 | 0 | 0 | 0 |
| 5 | Mihiro FURUKAWA | 6 | 4 | 67% | 0 | 0 | 0 | 0 | 2 | 3 | 0 | 1 | 0 | 1 | 5 | 0 | 6 | 0 | 0 |
| 9 | Nanami TAIRA | 1 | 1 | 100% | 0 | 0 | 0 | 0 | 0 | 1 | 0 | 0 | 0 | 1 | 0 | 0 | 1 | 0 | 0 |
| 19 | Ena KOIZUMI | 4 | 2 | 50% | 0 | 0 | 0 | 0 | 2 | 0 | 1 | 1 | 0 | 2 | 0 | 2 | 3 | 0 | 1 |
| 20 | Manami SATO | 1 | 0 | 0% | 0 | 0 | 0 | 0 | 0 | 0 | 0 | 0 | 1 | 1 | 0 | 0 | 0 | 0 | 1 |

Passing Networks

| # | Passes From ↓ to → | KIM Son Gyong | YUN Jin A | RI Jin A | RI Ui Gyong | EH Chong Gum | RI Kyong Im | YU Jong Hyang | PAK Rye Yong | RYU Jin Ju | KIM Won Sim | KIM Su Rim | PAK Su Rim | RI Ye Rim | PAEK So Hyang |
|----|--------------------|---------------|-----------|----------|-------------|--------------|-------------|---------------|--------------|------------|-------------|------------|------------|-----------|---------------|
| 1 | KIM Son Gyong | | 0 | 0 | 2 | 0 | 0 | 2 | 0 | 3 | 0 | 1 | 0 | 0 | 0 |
| 2 | YUN Jin A | 0 | | 0 | 8 | 5 | 0 | 1 | 0 | 1 | 1 | 0 | 0 | 0 | 0 |
| 3 | RI Jin A | 3 | 1 | | 1 | 0 | 1 | 1 | 3 | 0 | 0 | 4 | 0 | 0 | 0 |
| 7 | RI Ui Gyong | 0 | 3 | 0 | | 6 | 0 | 3 | 1 | 2 | 7 | 0 | 0 | 2 | 1 |
| 8 | EH Chong Gum | 0 | 9 | 1 | 4 | | 3 | 3 | 1 | 0 | 4 | 1 | 0 | 0 | 1 |
| 9 | RI Kyong Im | 0 | 2 | 3 | 0 | 1 | | 5 | 2 | 2 | 3 | 5 | 0 | 0 | 1 |
| 10 | YU Jong Hyang | 0 | 2 | 3 | 0 | 6 | 3 | | 2 | 0 | 5 | 0 | 0 | 1 | 0 |
| 11 | PAK Rye Yong | 0 | 0 | 0 | 0 | 0 | 3 | 4 | | 0 | 3 | 3 | 0 | 0 | 0 |
| 12 | RYU Jin Ju | 3 | 3 | 2 | 1 | 0 | 4 | 1 | 1 | | 2 | 2 | 0 | 0 | 0 |
| 15 | KIM Won Sim | 0 | 4 | 0 | 7 | 1 | 4 | 7 | 3 | 0 | | 3 | 0 | 0 | 0 |
| 17 | KIM Su Rim | 1 | 0 | 4 | 2 | 1 | 1 | 0 | 4 | 1 | 3 | | 0 | 0 | 0 |
| 6 | PAK Su Rim | 0 | 0 | 0 | 0 | 0 | 0 | 0 | 0 | 0 | 0 | 0 | | 0 | 0 |
| 16 | RI Ye Rim | 0 | 0 | 0 | 1 | 0 | 0 | 1 | 0 | 0 | 0 | 0 | 0 | | 0 |
| 20 | PAEK So Hyang | 0 | 0 | 0 | 0 | 1 | 0 | 0 | 0 | 0 | 0 | 0 | 0 | 0 | |

Korea DPR



| Top 5 Player to Player Passers | | |
|--------------------------------|---------------|------------------------|
| Player | Passed To | % of Total Team Passes |
| EH Chong Gum | YUN Jin A | 4.1% |
| YUN Jin A | RI Ui Gyong | 3.7% |
| RI Ui Gyong | KIM Won Sim | 3.2% |
| KIM Won Sim | YU Jong Hyang | 3.2% |
| KIM Won Sim | RI Ui Gyong | 3.2% |

Passing Networks

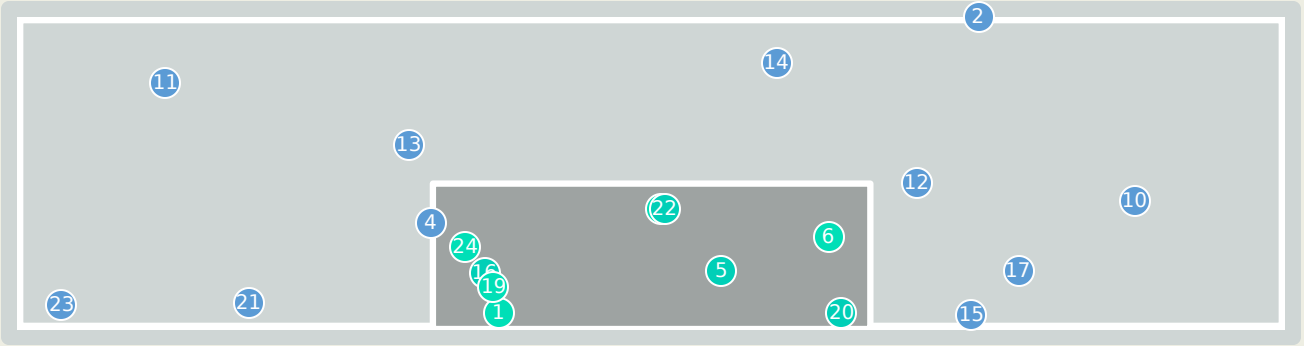
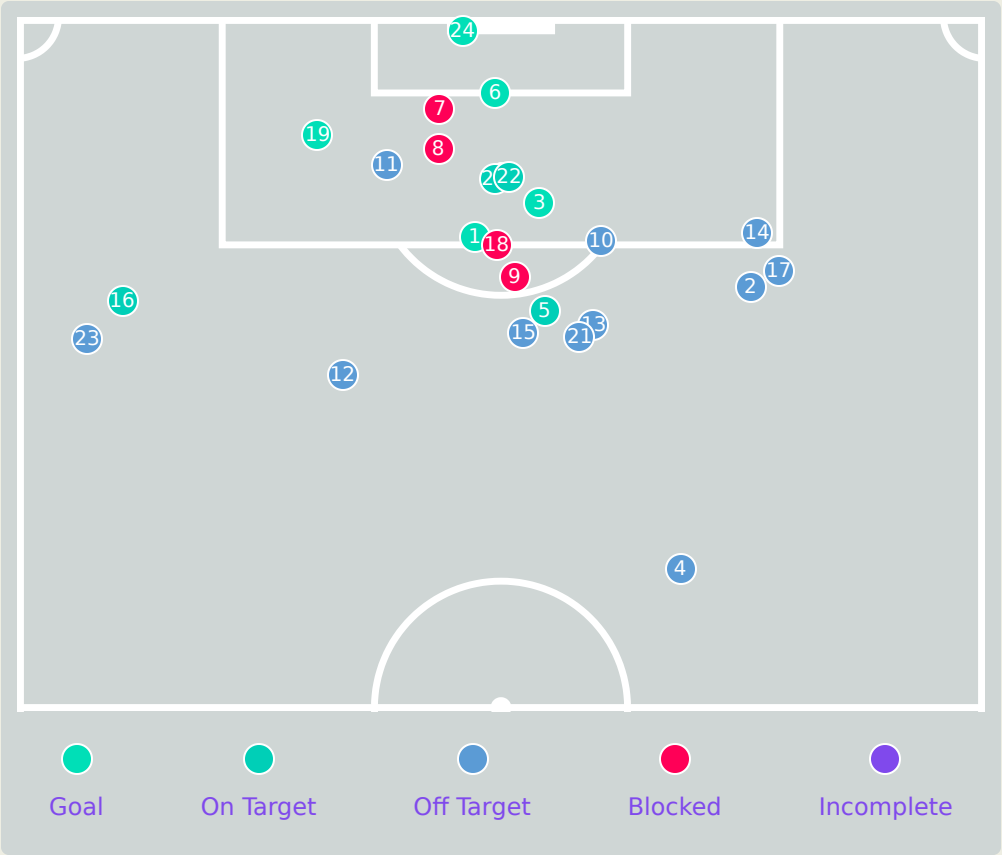


| # | Passes From ↓ to → | Rena YAMAUCHI | Yuna AOKI | Ema MATSUOKA | Honoka SUNAGA | Konoha NAKAMURA | Noa FUKUSHIMA | Yuna TAKAHASHI | Ua ONO | Niko SHIKIDA | Mone SATO | Kelly NEREI | Momoka SANO | Mihiro FURUKAWA | Nanami TAIRA | Ena KOIZUMI | Manami SATO |
|----|--------------------|---------------|-----------|--------------|---------------|-----------------|---------------|----------------|--------|--------------|-----------|-------------|-------------|-----------------|--------------|-------------|-------------|
| 12 | Rena YAMAUCHI | | 14 | 4 | 3 | 0 | 0 | 0 | 0 | 0 | 0 | 4 | 0 | 1 | 0 | 2 | 0 |
| 3 | Yuna AOKI | 6 | | 11 | 12 | 9 | 3 | 3 | 0 | 0 | 0 | 9 | 0 | 0 | 5 | 1 | 0 |
| 6 | Ema MATSUOKA | 2 | 15 | | 1 | 0 | 3 | 4 | 0 | 0 | 2 | 0 | 0 | 1 | 0 | 0 | 0 |
| 7 | Honoka SUNAGA | 1 | 6 | 2 | | 4 | 8 | 6 | 1 | 1 | 1 | 4 | 0 | 2 | 3 | 1 | 2 |
| 8 | Konoha NAKAMURA | 1 | 4 | 0 | 4 | | 3 | 2 | 1 | 4 | 1 | 6 | 0 | 2 | 0 | 1 | 0 |
| 10 | Noa FUKUSHIMA | 0 | 0 | 5 | 1 | 1 | | 2 | 0 | 1 | 1 | 5 | 0 | 0 | 1 | 0 | 1 |
| 11 | Yuna TAKAHASHI | 0 | 0 | 1 | 2 | 3 | 2 | | 0 | 2 | 2 | 0 | 0 | 3 | 7 | 0 | 0 |
| 13 | Ua ONO | 0 | 4 | 0 | 2 | 0 | 0 | 1 | | 0 | 0 | 0 | 0 | 0 | 0 | 0 | 0 |
| 15 | Niko SHIKIDA | 0 | 0 | 0 | 0 | 3 | 3 | 0 | 1 | | 0 | 6 | 0 | 0 | 0 | 0 | 0 |
| 16 | Mone SATO | 0 | 0 | 1 | 2 | 1 | 0 | 5 | 0 | 0 | | 0 | 0 | 0 | 0 | 0 | 0 |
| 17 | Kelly NEREI | 1 | 6 | 0 | 7 | 5 | 5 | 0 | 1 | 0 | 0 | | 0 | 0 | 1 | 0 | 0 |
| 4 | Momoka SANO | 0 | 0 | 0 | 0 | 0 | 0 | 0 | 0 | 0 | 0 | 0 | | 0 | 0 | 0 | 0 |
| 5 | Mihiro FURUKAWA | 0 | 0 | 0 | 2 | 2 | 0 | 4 | 0 | 0 | 0 | 0 | 0 | | 0 | 0 | 0 |
| 9 | Nanami TAIRA | 0 | 1 | 0 | 2 | 1 | 3 | 0 | 0 | 0 | 0 | 3 | 0 | 2 | | 0 | 1 |
| 19 | Ena KOIZUMI | 1 | 3 | 0 | 1 | 0 | 0 | 0 | 0 | 0 | 0 | 0 | 0 | 0 | 0 | | 0 |
| 20 | Manami SATO | 0 | 0 | 0 | 0 | 1 | 1 | 0 | 0 | 0 | 0 | 0 | 0 | 0 | 0 | 0 | |

| Top 5 Player to Player Passers | | |
|--------------------------------|---------------|------------------------|
| Player | Passed To | % of Total Team Passes |
| Ema MATSUOKA | Yuna AOKI | 4.9% |
| Rena YAMAUCHI | Yuna AOKI | 4.5% |
| Yuna AOKI | Honoka SUNAGA | 3.9% |
| Yuna AOKI | Ema MATSUOKA | 3.6% |

| | | |
|-----------|-----------------|------|
| Yuna AOKI | Konoha NAKAMURA | 2.9% |
|-----------|-----------------|------|

Attempts at Goal



| Key | Outcome | Shots |
|-----|------------|-------|
| ● | Goals | 5 |
| ● | On Target | 4 |
| ● | Off Target | 11 |
| ● | Blocked | 4 |
| ● | Incomplete | 0 |

Attempts at Goal



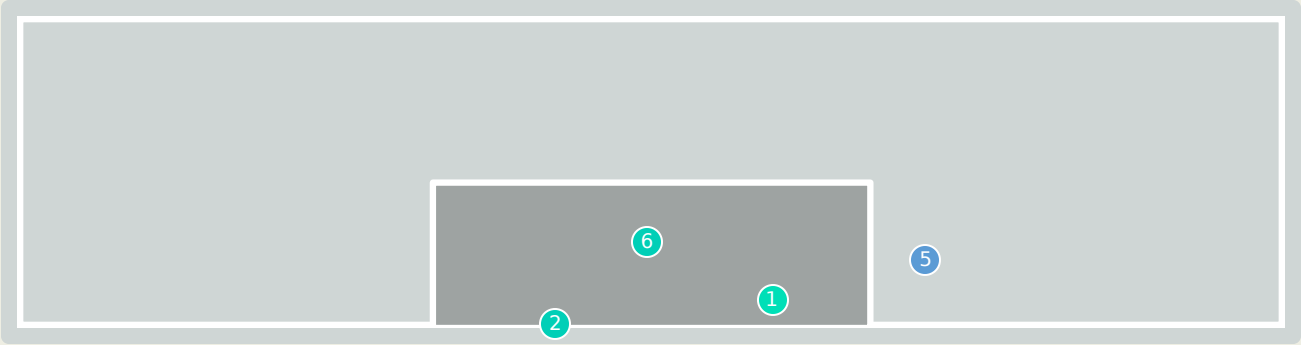
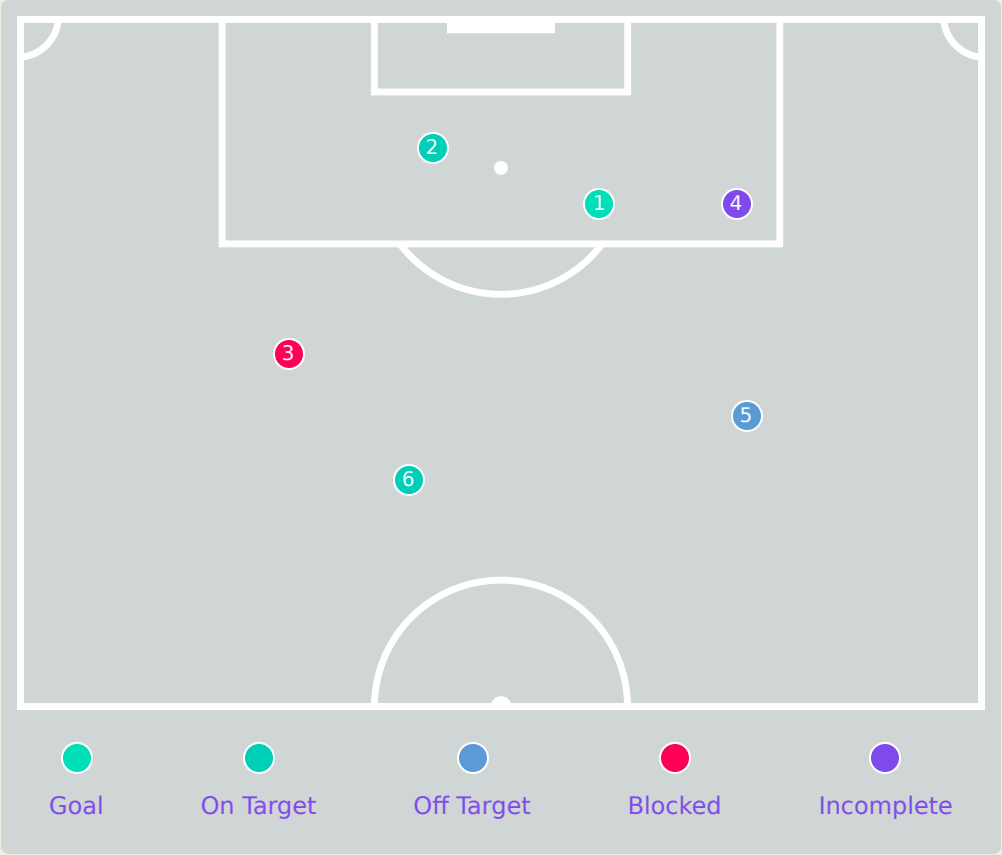
| Time | Player | Outcome | Body Part | Delivery Type |
|------|------------------|----------------------|------------|---------------|
| 0 | 15 KIM Won Sim | On Target - Goal | Left Foot | Pass |
| 4 | 10 YU Jong Hyang | Off Target | Right Foot | Pass |
| 5 | 7 RI Ui Gyong | On Target - Goal | Right Foot | Pass |
| 13 | 12 RYU Jin Ju | Off Target | Right Foot | Loose Ball |
| 14 | 10 YU Jong Hyang | On Target - Saved | Right Foot | Pass |
| 21 | 10 YU Jong Hyang | On Target - Goal | Head | Corner |
| 27 | 10 YU Jong Hyang | Incomplete - Blocked | Left Foot | Cross |
| 27 | 10 YU Jong Hyang | Incomplete - Blocked | Right Foot | Pass |
| 27 | 3 RI Jin A | Incomplete - Blocked | Left Foot | Pass |
| 30 | 15 KIM Won Sim | Off Target | Right Foot | Pass |
| 32 | 7 RI Ui Gyong | Off Target | Left Foot | Cross |
| 37 | 8 EH Chong Gum | Off Target | Right Foot | Pass |
| 45 | 8 EH Chong Gum | Off Target | Left Foot | Pass |
| 48 | 10 YU Jong Hyang | Off Target | Right Foot | Pass |
| 51 | 8 EH Chong Gum | Off Target | Left Foot | Pass |
| 52 | 8 EH Chong Gum | On Target - Saved | Left Foot | Pass |
| 61 | 11 PAK Rye Yong | Off Target | Right Foot | Loose Ball |

Attempts at Goal



| Time | Player | Outcome | Body Part | Delivery Type |
|------|------------------|----------------------|------------|------------------|
| 64 | 7 RI Ui Gyong | Incomplete - Blocked | Right Foot | Loose Ball |
| 72 | 15 KIM Won Sim | On Target - Goal | Left Foot | Ball Progression |
| 79 | 7 RI Ui Gyong | On Target - Saved | Head | Cross |
| 82 | 16 RI Ye Rim | Off Target | Right Foot | Pass |
| 84 | 10 YU Jong Hyang | On Target - Saved | Head | Cross |
| 94 | 2 YUN Jin A | Off Target | Right Foot | Pass |
| 95 | 7 RI Ui Gyong | On Target - Goal | Head | Corner |

Attempts at Goal



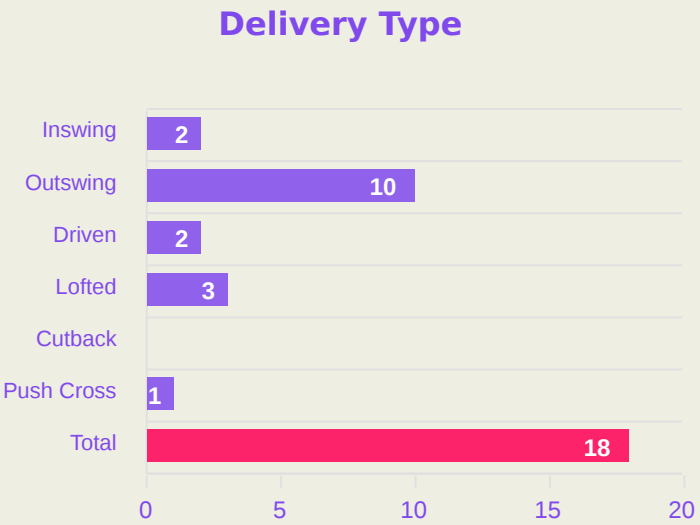
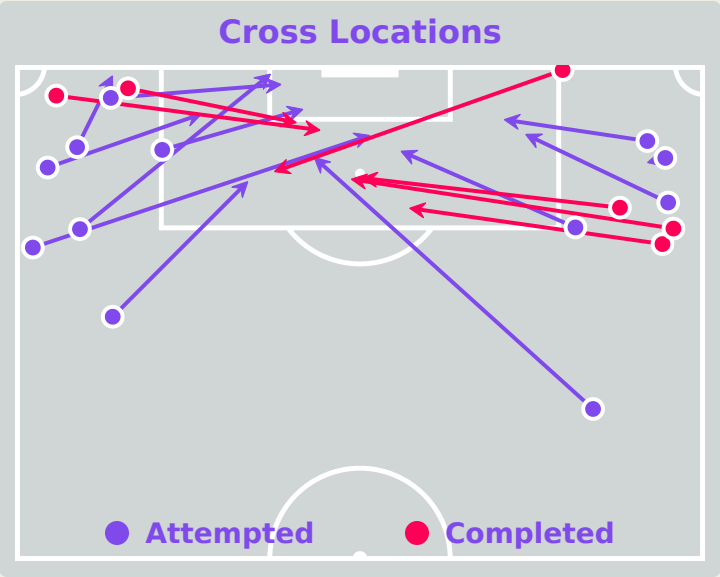
| Key | Outcome | Shots |
|-----|------------|-------|
| ● | Goals | 1 |
| ● | On Target | 2 |
| ● | Off Target | 1 |
| ● | Blocked | 1 |
| ● | Incomplete | 1 |

Attempts at Goal



| Time | Player | Outcome | Body Part | Delivery Type |
|------|-------------------|---------------------------|------------|------------------|
| 7 | 8 Konoha NAKAMURA | On Target - Goal | Left Foot | Ball Progression |
| 19 | 10 Noa FUKUSHIMA | On Target - Saved | Left Foot | Pass |
| 26 | 11 Yuna TAKAHASHI | Incomplete - Blocked | Right Foot | Pass |
| 49 | 8 Konoha NAKAMURA | Incomplete - Foul Against | Left Foot | Pass |
| 76 | 10 Noa FUKUSHIMA | Off Target - Saved | Right Foot | Pass |
| 77 | 11 Yuna TAKAHASHI | On Target - Saved | Right Foot | Pass |

Crosses (Open Play)



| # | Player | Inswing | Outswing | Driven | Lofted | Cutback | Push Cross | Total Attempted |
|----|---------------|---------|----------|--------|--------|---------|------------|-----------------|
| 1 | KIM Son Gyong | 0 | 0 | 0 | 0 | 0 | 0 | 0 |
| 2 | YUN Jin A | 0 | 0 | 0 | 2 | 0 | 0 | 2 |
| 3 | RI Jin A | 0 | 0 | 0 | 0 | 0 | 0 | 0 |
| 7 | RI Ui Gyong | 1 | 2 | 1 | 1 | 0 | 0 | 5 |
| 8 | EH Chong Gum | 0 | 0 | 0 | 0 | 0 | 0 | 0 |
| 9 | RI Kyong Im | 0 | 1 | 0 | 0 | 0 | 0 | 1 |
| 10 | YU Jong Hyang | 0 | 1 | 0 | 0 | 0 | 0 | 1 |
| 11 | PAK Rye Yong | 0 | 3 | 0 | 0 | 0 | 0 | 3 |
| 12 | RYU Jin Ju | 0 | 0 | 0 | 0 | 0 | 0 | 0 |
| 15 | KIM Won Sim | 0 | 2 | 0 | 0 | 0 | 0 | 2 |
| 17 | KIM Su Rim | 1 | 1 | 0 | 0 | 0 | 1 | 3 |
| 6 | PAK Su Rim | 0 | 0 | 0 | 0 | 0 | 0 | 0 |
| 16 | RI Ye Rim | 0 | 0 | 1 | 0 | 0 | 0 | 1 |
| 20 | PAEK So Hyang | 0 | 0 | 0 | 0 | 0 | 0 | 0 |



Attempted

18

Completed

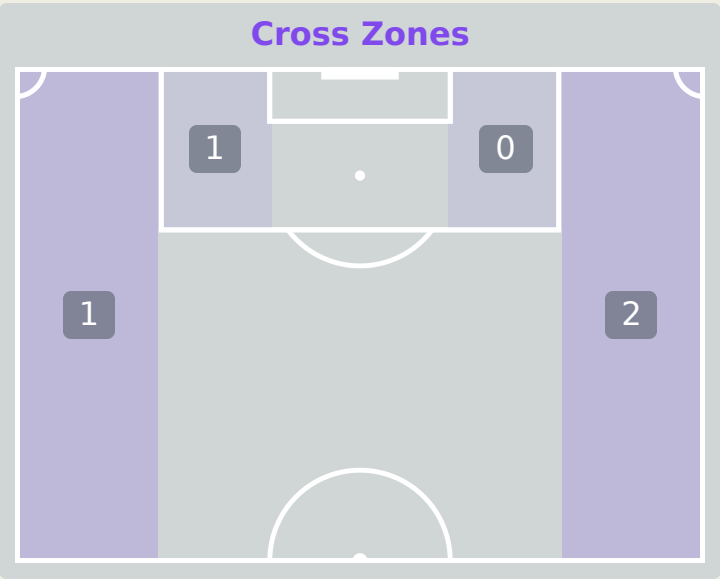
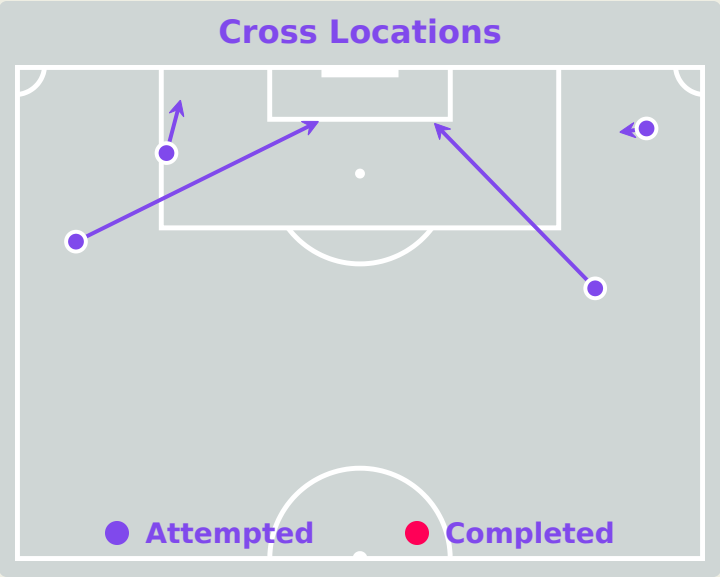
6

Most Crosses Attempted

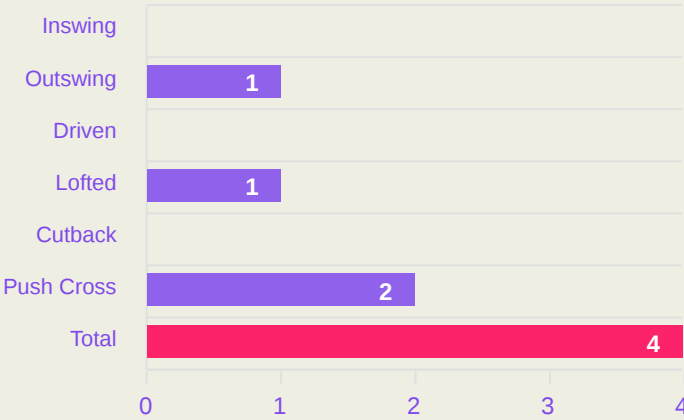
5

RI Ui Gyong
LEFT MIDFIELD

Crosses (Open Play)



Delivery Type



Attempted

4

Completed

0

Most Crosses Attempted

2

Yuna TAKAHASHI
LEFT WINGER

| # | Player | Inswing | Outswing | Driven | Lofted | Cutback | Push Cross | Total Attempted |
|----|-----------------|---------|----------|--------|--------|---------|------------|-----------------|
| 12 | Rena YAMAUCHI | 0 | 0 | 0 | 0 | 0 | 0 | 0 |
| 3 | Yuna AOKI | 0 | 0 | 0 | 0 | 0 | 0 | 0 |
| 6 | Ema MATSUOKA | 0 | 0 | 0 | 0 | 0 | 0 | 0 |
| 7 | Honoka SUNAGA | 0 | 0 | 0 | 0 | 0 | 0 | 0 |
| 8 | Konoha NAKAMURA | 0 | 0 | 0 | 0 | 0 | 0 | 0 |
| 10 | Noa FUKUSHIMA | 0 | 0 | 0 | 0 | 0 | 0 | 0 |
| 11 | Yuna TAKAHASHI | 0 | 0 | 0 | 0 | 0 | 2 | 2 |
| 13 | Ua ONO | 0 | 0 | 0 | 0 | 0 | 0 | 0 |
| 15 | Niko SHIKIDA | 0 | 1 | 0 | 0 | 0 | 0 | 1 |
| 16 | Mone SATO | 0 | 0 | 0 | 0 | 0 | 0 | 0 |
| 17 | Kelly NEREI | 0 | 0 | 0 | 1 | 0 | 0 | 1 |
| 4 | Momoka SANO | 0 | 0 | 0 | 0 | 0 | 0 | 0 |
| 5 | Mihiro FURUKAWA | 0 | 0 | 0 | 0 | 0 | 0 | 0 |
| 9 | Nanami TAIRA | 0 | 0 | 0 | 0 | 0 | 0 | 0 |
| 19 | Ena KOIZUMI | 0 | 0 | 0 | 0 | 0 | 0 | 0 |
| 20 | Manami SATO | 0 | 0 | 0 | 0 | 0 | 0 | 0 |

Offering to Receive

214

Total Offers Made

75

Total Offers Received

Most Offers

49

RI Ui Gyong

LEFT MIDFIELD

102

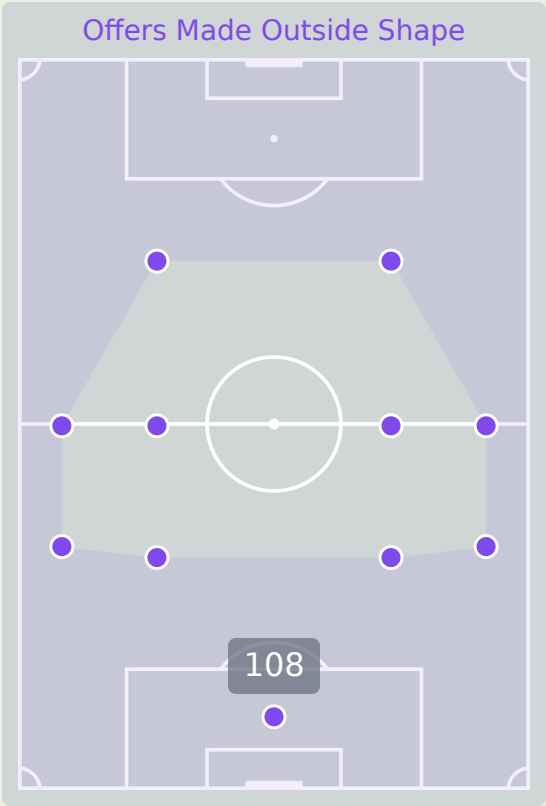
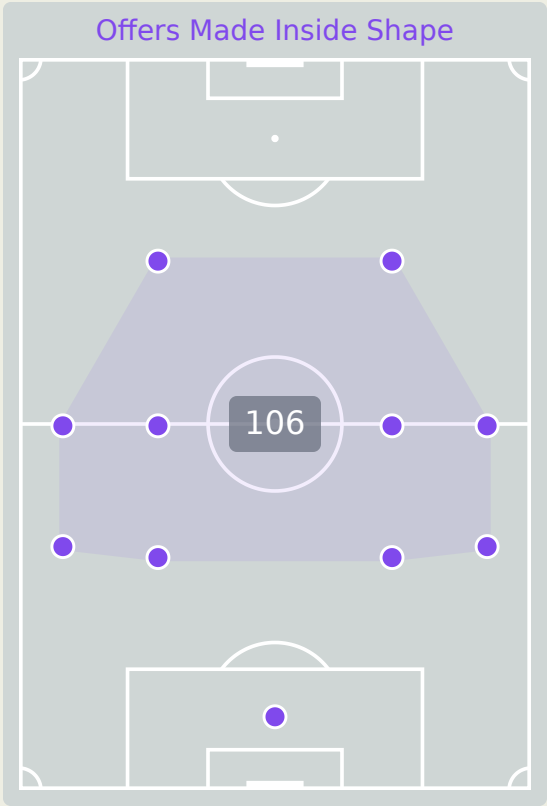
Offers Made in Final Third

92

Offers Made in Middle Third

20

Offers Made in Defensive Third



Korea DPR

| # | Player | Offers Made | Offers Received | % Made & Received |
|----|---------------|-------------|-----------------|-------------------|
| 1 | KIM Son Gyong | 1 | 1 | 100% |
| 2 | YUN Jin A | 21 | 9 | 42.9% |
| 3 | RI Jin A | 5 | 1 | 20% |
| 7 | RI Ui Gyong | 49 | 10 | 20.4% |
| 8 | EH Chong Gum | 34 | 15 | 44.1% |
| 9 | RI Kyong Im | 17 | 7 | 41.2% |
| 10 | YU Jong Hyang | 19 | 7 | 36.8% |
| 11 | PAK Rye Yong | 23 | 5 | 21.7% |
| 12 | RYU Jin Ju | 10 | 6 | 60% |
| 15 | KIM Won Sim | 16 | 7 | 43.8% |
| 17 | KIM Su Rim | 13 | 5 | 38.5% |
| 6 | PAK Su Rim | 0 | 0 | 0% |
| 16 | RI Ye Rim | 3 | 1 | 33.3% |
| 20 | PAEK So Hyang | 3 | 1 | 33.3% |

Offering to Receive



276

Total Offers Made

101

Total Offers Received

Most Offers

57

Noa FUKUSHIMA

LEFT CENTRE MIDFIELD

83

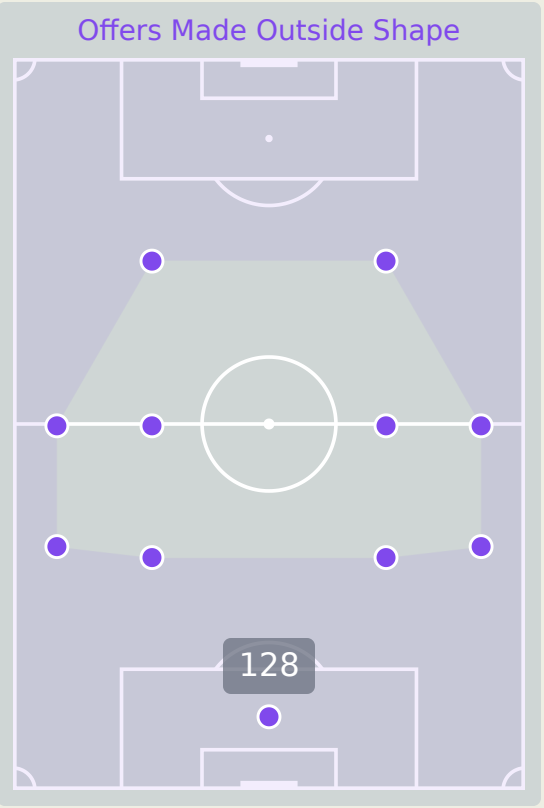
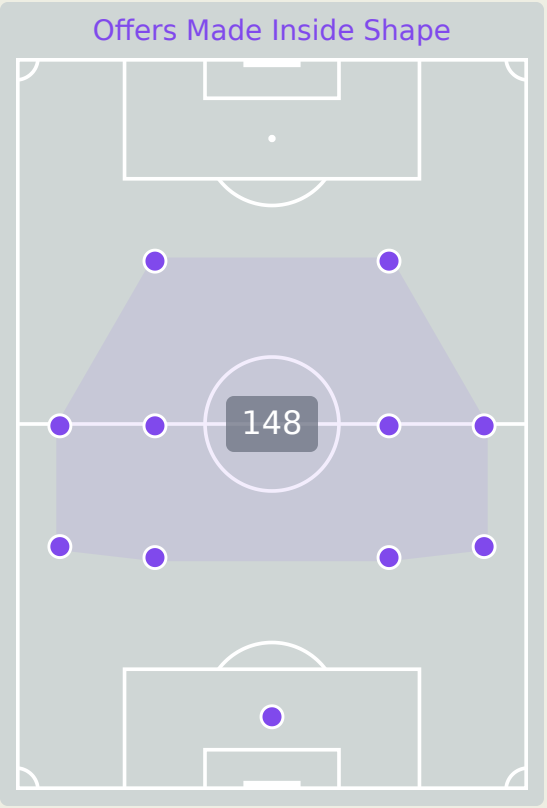
Offers Made in Final Third

139

Offers Made in Middle Third

54

Offers Made in Defensive Third



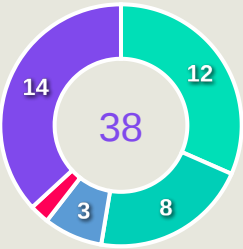
| # | Player | Offers Made | Offers Received | % Made & Received |
|----|-----------------|-------------|-----------------|-------------------|
| 12 | Rena YAMAUCHI | 3 | 0 | 0% |
| 3 | Yuna AOKI | 3 | 1 | 33.3% |
| 6 | Ema MATSUOKA | 14 | 8 | 57.1% |
| 7 | Honoka SUNAGA | 14 | 13 | 92.9% |
| 8 | Konoha NAKAMURA | 30 | 15 | 50% |
| 10 | Noa FUKUSHIMA | 57 | 19 | 33.3% |
| 11 | Yuna TAKAHASHI | 30 | 12 | 40% |
| 13 | Ua ONO | 13 | 2 | 15.4% |
| 15 | Niko SHIKIDA | 13 | 4 | 30.8% |
| 16 | Mone SATO | 14 | 3 | 21.4% |
| 17 | Kelly NEREI | 28 | 12 | 42.9% |
| 4 | Momoka SANO | 0 | 0 | 0% |
| 5 | Mihiro FURUKAWA | 9 | 3 | 33.3% |
| 9 | Nanami TAIRA | 22 | 7 | 31.8% |
| 19 | Ena KOIZUMI | 3 | 0 | 0% |
| 20 | Manami SATO | 23 | 2 | 8.7% |

Movement to Receive

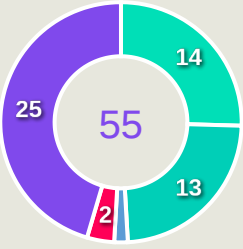


Movement Types by Phase

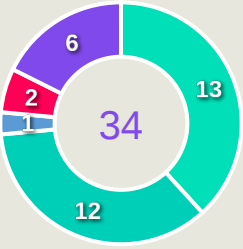
Final Third Phase



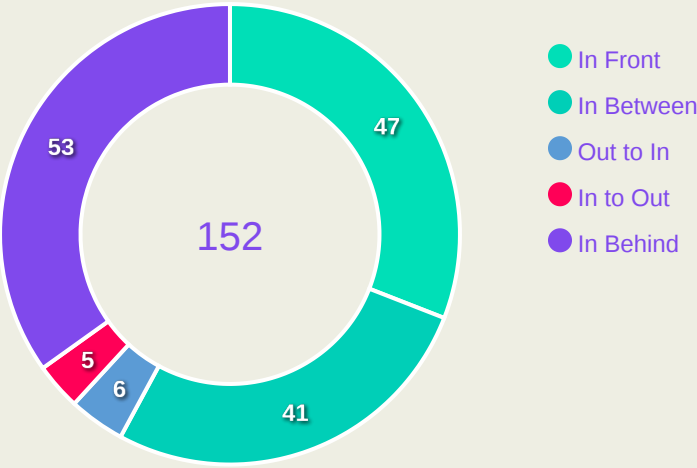
Progression Phase



Build Up Phase



All Movement Types

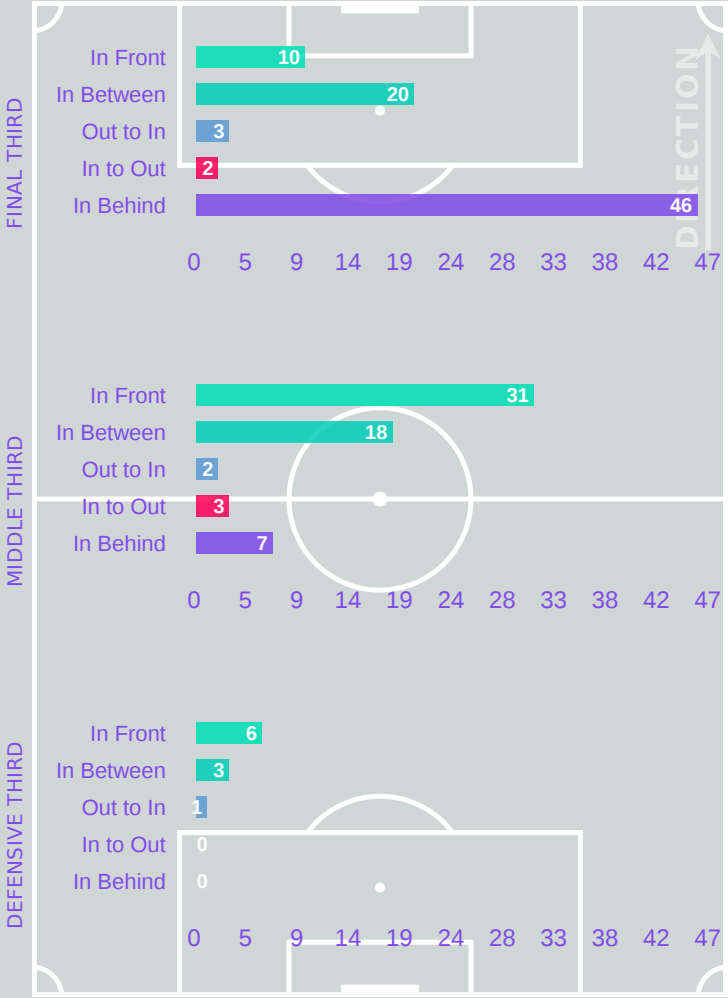


- In Front
- In Between
- Out to In
- In to Out
- In Behind

Top Ranked Players

| Type | Player | Movements |
|------------|------------------|-----------|
| In Front | 8 EH Chong Gum | 19 |
| In Between | 8 EH Chong Gum | 13 |
| Out to In | 7 RI Ui Gyong | 3 |
| In to Out | 7 RI Ui Gyong | 4 |
| In Behind | 10 YU Jong Hyang | 15 |

Movement Types Pitch Third

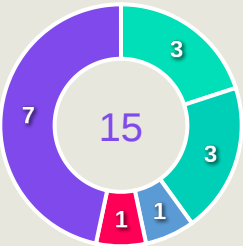


Movement to Receive

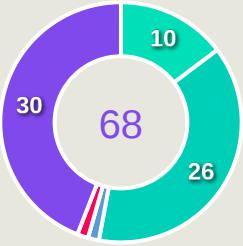


Movement Types by Phase

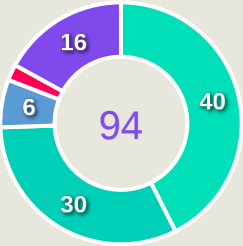
Final Third Phase



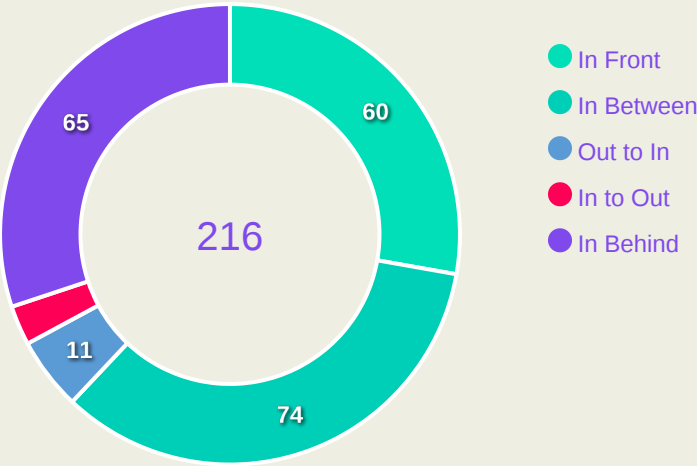
Progression Phase



Build Up Phase



All Movement Types

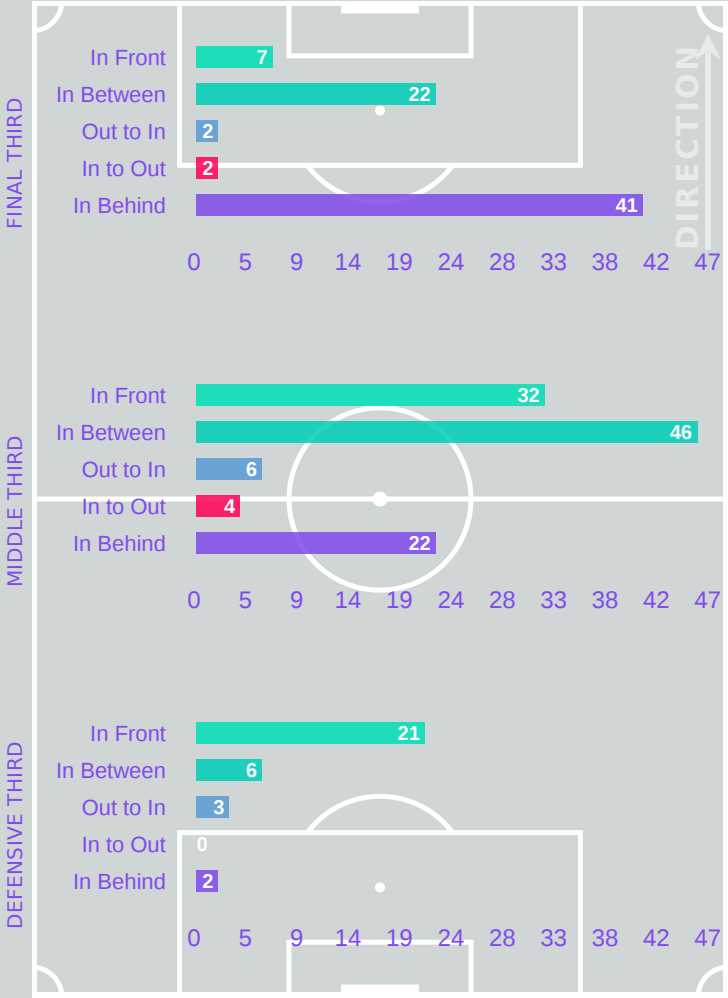


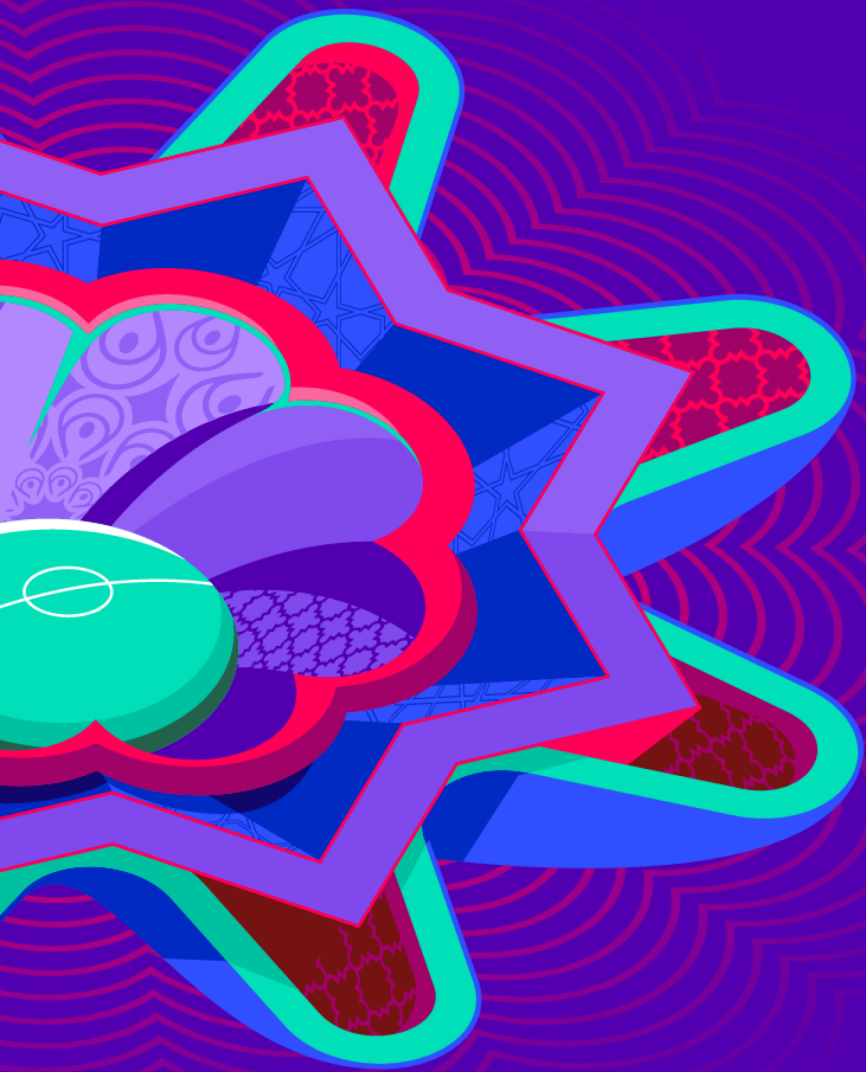
- In Front
- In Between
- Out to In
- In to Out
- In Behind

Top Ranked Players

| Type | Player | Movements |
|------------|-------------------|-----------|
| In Front | 10 Noa FUKUSHIMA | 11 |
| In Between | 10 Noa FUKUSHIMA | 29 |
| Out to In | 11 Yuna TAKAHASHI | 5 |
| In to Out | 8 Konoha NAKAMURA | 2 |
| In Behind | 20 Manami SATO | 17 |

Movement Types Pitch Third





OUT OF POSSESSION

Korea DPR 5 - 1 Japan

Defensive Actions

67

Forced Turnovers

77

Possession Regained

8

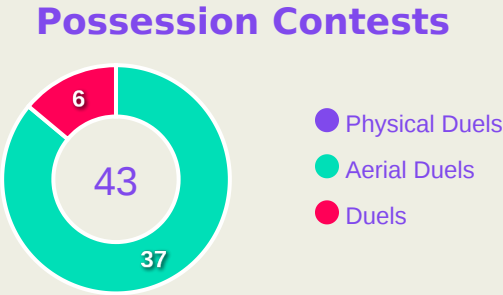
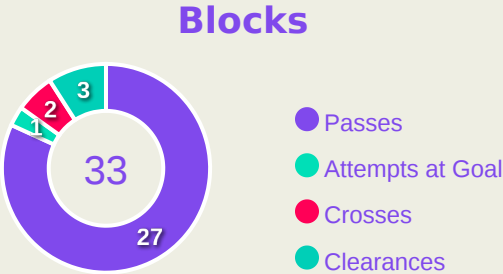
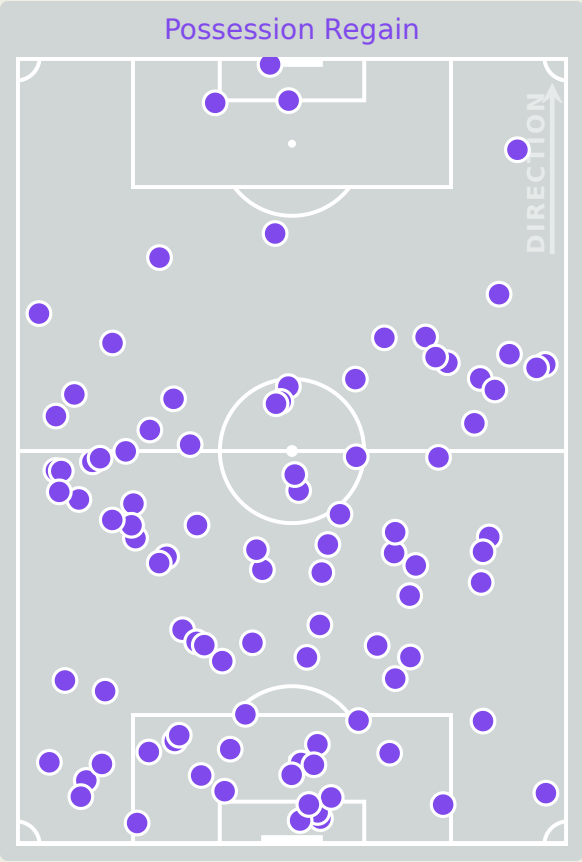
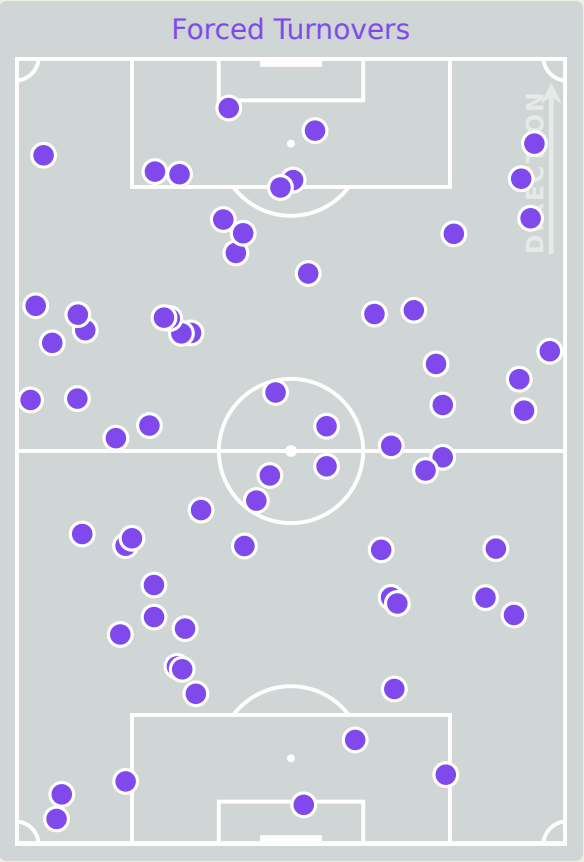
Interceptions

30

Tackles

2.45

Possession Actions / Defensive Action



Most Possession Regains

16

RYU Jin Ju
LEFT CENTRE BACK

Korea DPR

| # | Player | Total Possession Regains |
|----|---------------|--------------------------|
| 1 | KIM Son Gyong | 12 |
| 2 | YUN Jin A | 10 |
| 3 | RI Jin A | 11 |
| 7 | RI Ui Gyong | 3 |
| 8 | EH Chong Gum | 4 |
| 9 | RI Kyong Im | 8 |
| 10 | YU Jong Hyang | 0 |
| 11 | PAK Rye Yong | 6 |
| 12 | RYU Jin Ju | 16 |
| 15 | KIM Won Sim | 1 |
| 17 | KIM Su Rim | 6 |
| 6 | PAK Su Rim | 0 |
| 16 | RI Ye Rim | 0 |
| 20 | PAEK So Hyang | 0 |

Defensive Actions

60

Forced Turnovers

62

Possession Regained

11

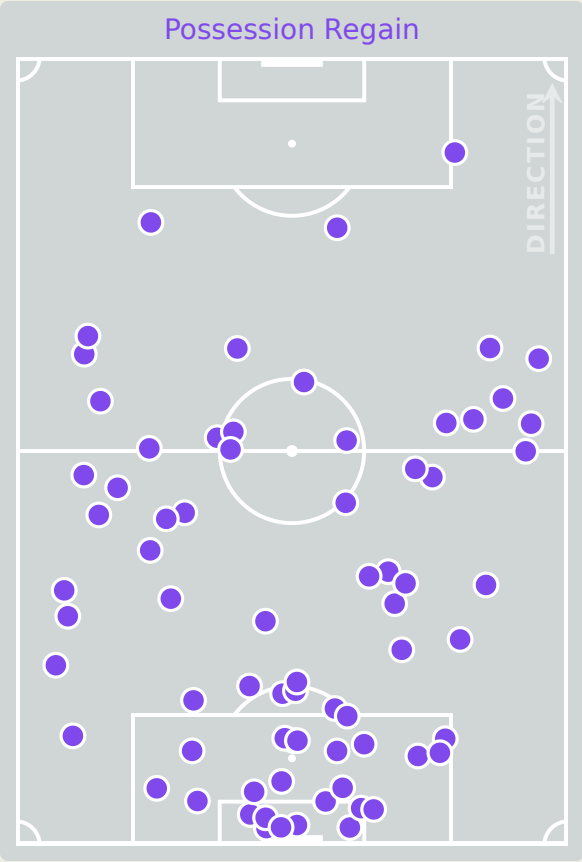
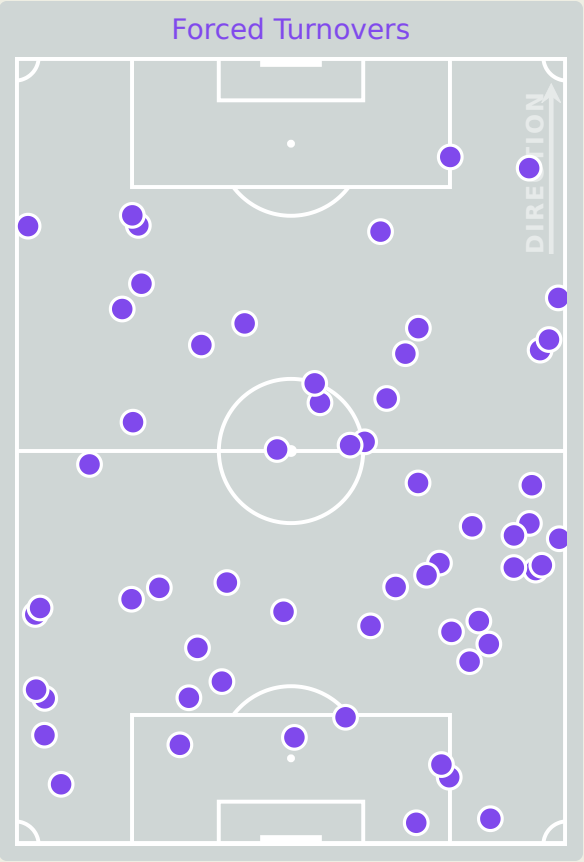
Interceptions

28

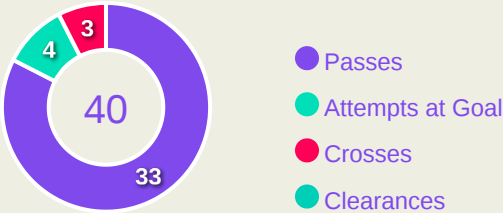
Tackles

2.93

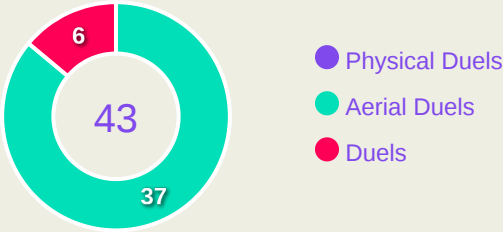
Possession Actions / Defensive Action



Blocks



Possession Contests



Most Possession Regains

13

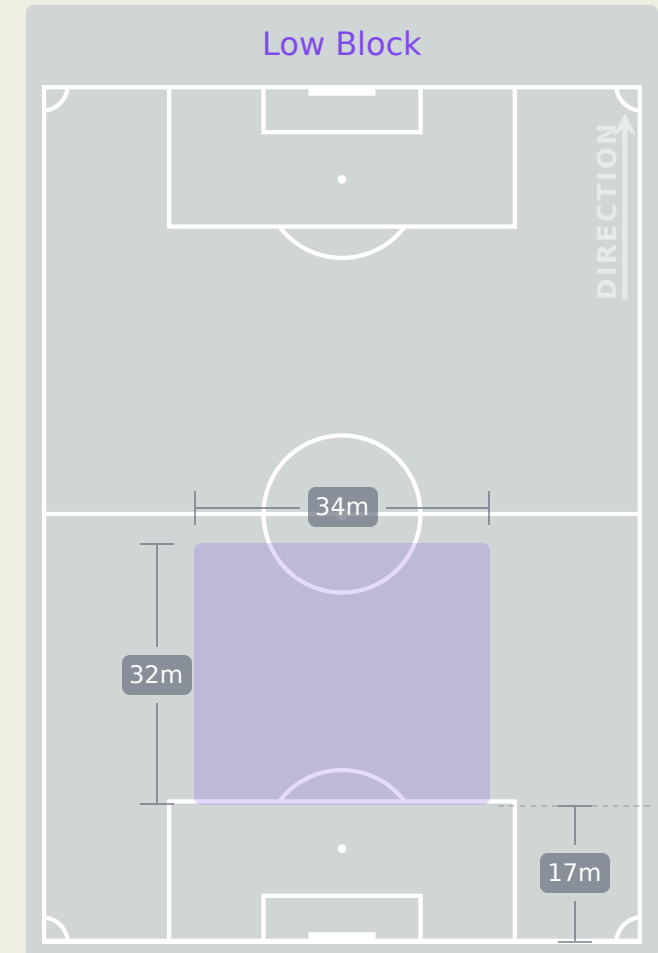
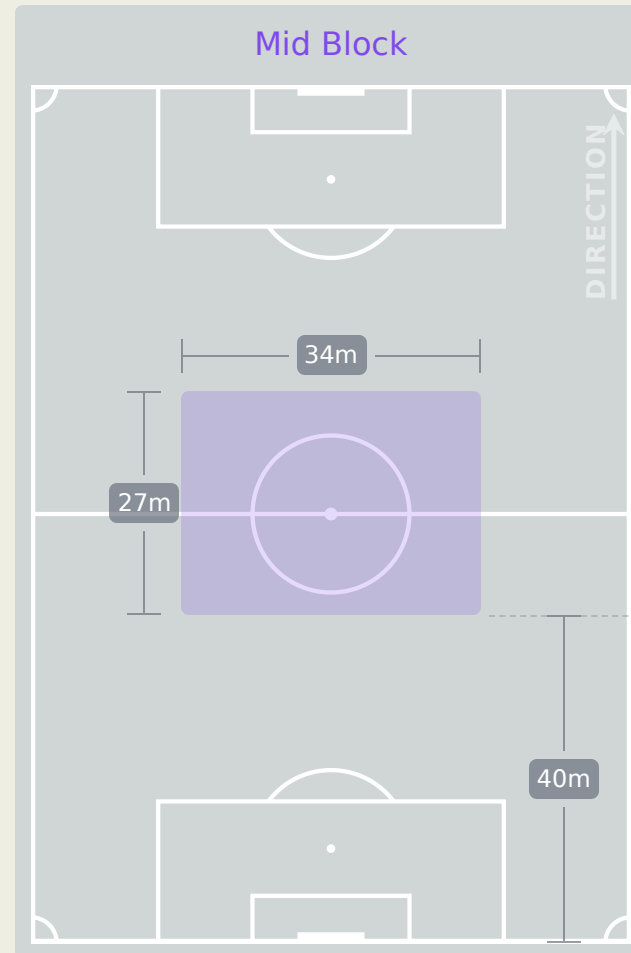
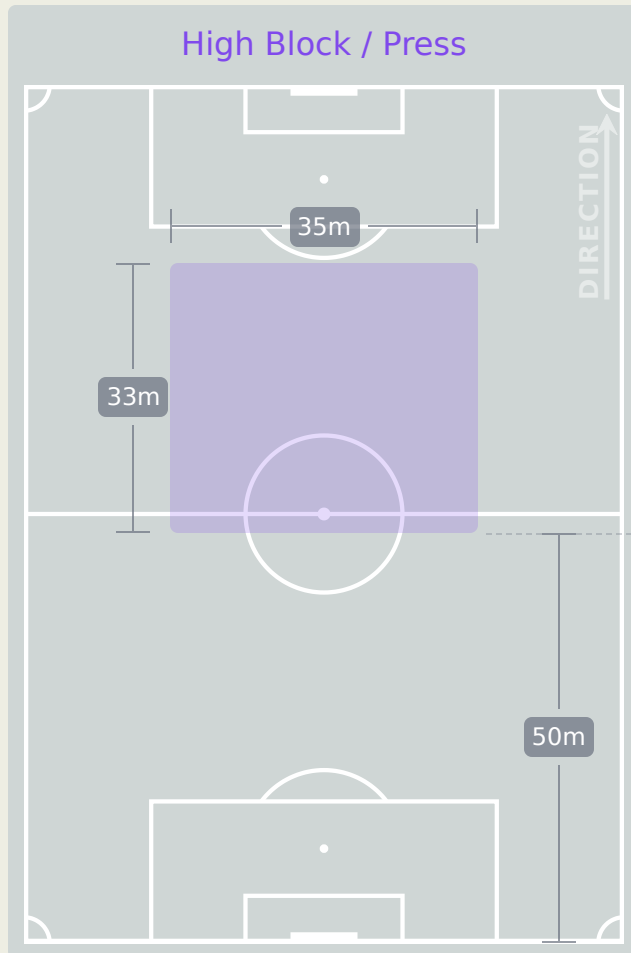
Rena YAMAUCHI

GOALKEEPER



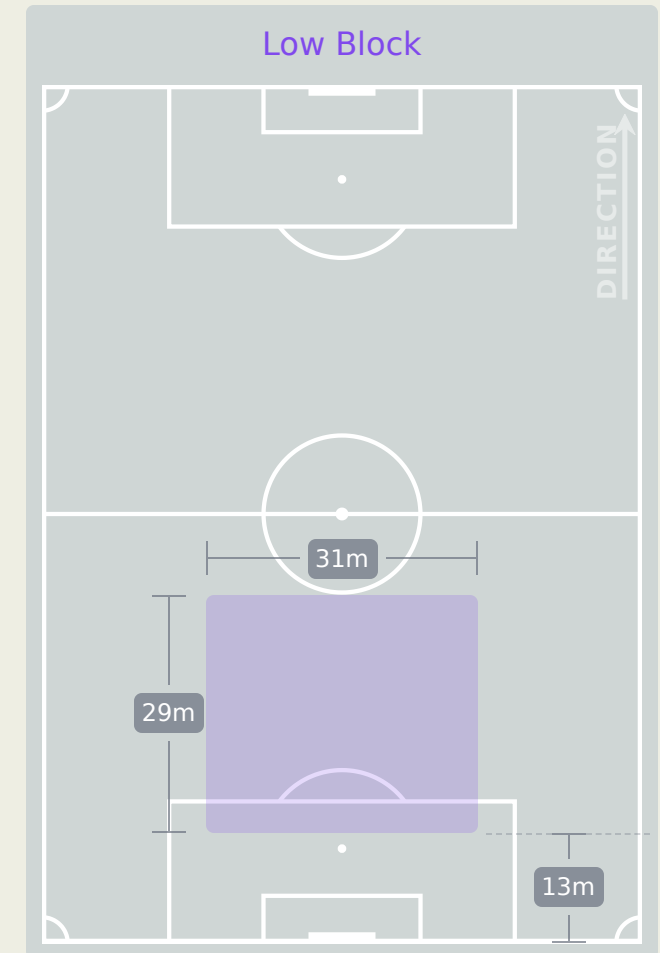
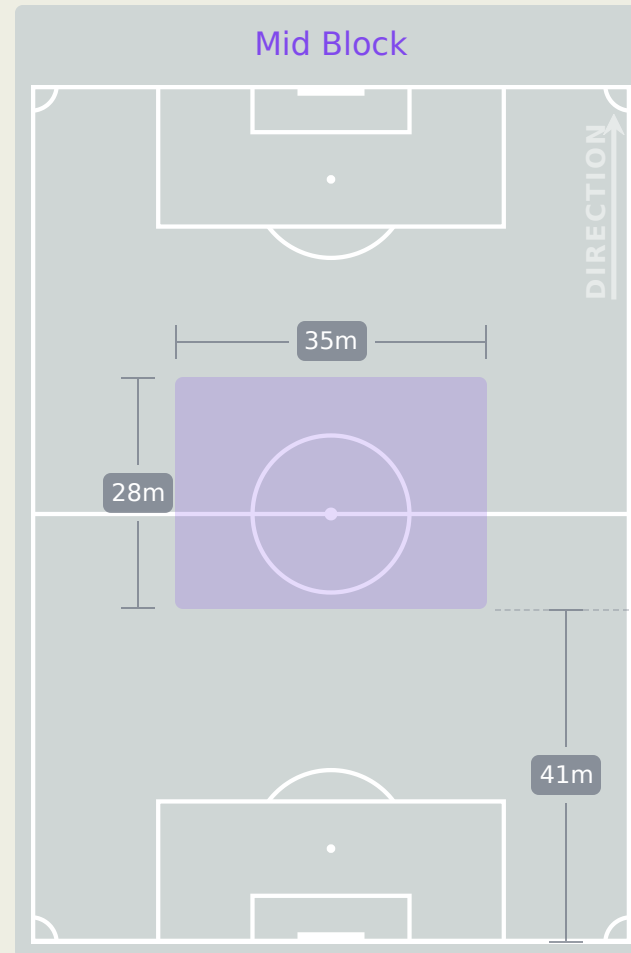
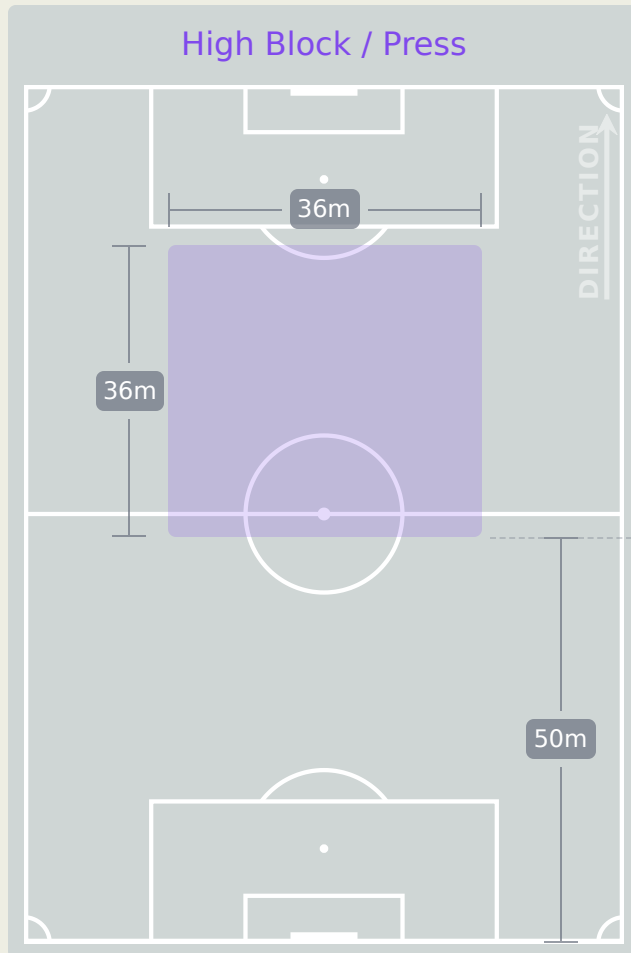
| # | Player | Total Possession Regains |
|----|-----------------|--------------------------|
| 12 | Rena YAMAUCHI | 13 |
| 3 | Yuna AOKI | 9 |
| 6 | Ema MATSUOKA | 7 |
| 7 | Honoka SUNAGA | 3 |
| 8 | Konoha NAKAMURA | 7 |
| 10 | Noa FUKUSHIMA | 2 |
| 11 | Yuna TAKAHASHI | 3 |
| 13 | Ua ONO | 0 |
| 15 | Niko SHIKIDA | 3 |
| 16 | Mone SATO | 7 |
| 17 | Kelly NEREI | 3 |
| 4 | Momoka SANO | 0 |
| 5 | Mihiro FURUKAWA | 2 |
| 9 | Nanami TAIRA | 1 |
| 19 | Ena KOIZUMI | 2 |
| 20 | Manami SATO | 0 |

Defensive Line Height & Team Length



Defensive Line Height & Team Length

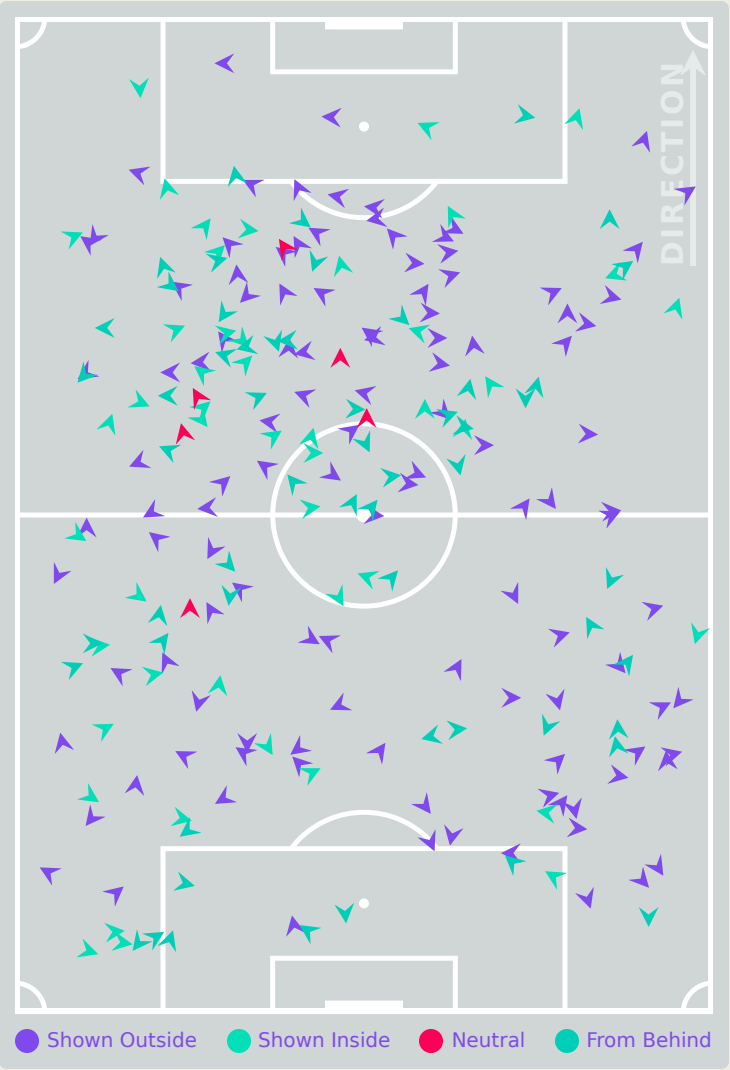
Japan 



Defensive Pressure



Korea DPR



| | | |
|--------|----------------------------|-------|
| 225 | Total Pressures | 182 |
| 54 | Direct Pressures | 55 |
| 1.34s | Avg Pressure Duration | 1.45s |
| 67 | Forced Turnovers | 60 |
| 12.79s | Ball Recovery Time | 8.76s |
| 75 | Pushing on into Pressing | 57 |
| 185 | Pushing on | 121 |
| 47 | Pressing Direction Inside | 21 |
| 116 | Pressing Direction Outside | 80 |

Most Direct Pressures

9

RI Ui Gyong
LEFT MIDFIELD

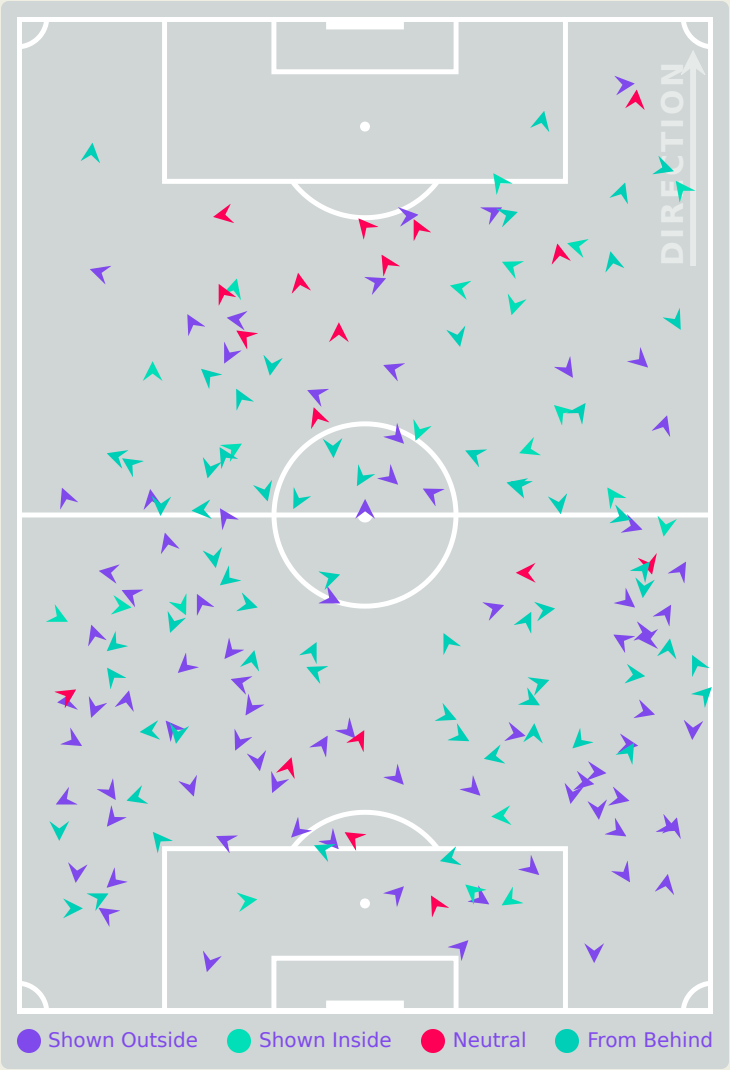
Most Direct Pressures

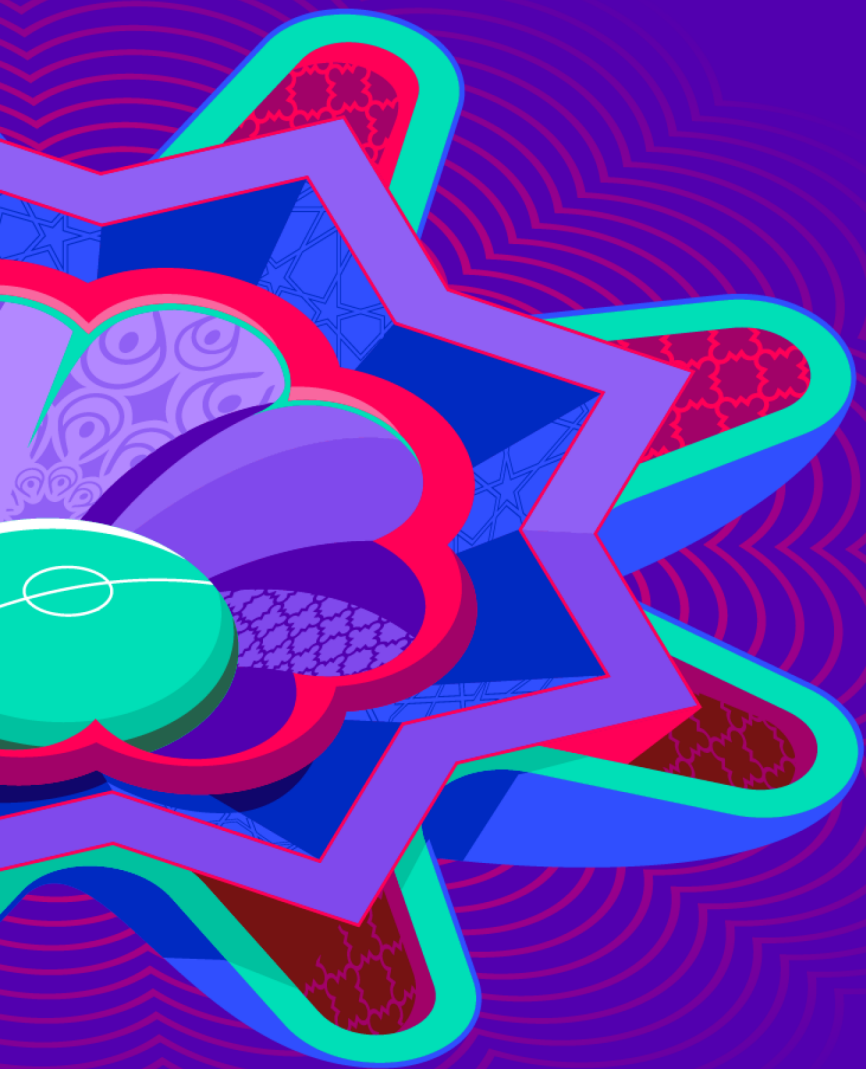
9

Yuna AOKI
RIGHT CENTRE BACK

Japan







GOALKEEPING

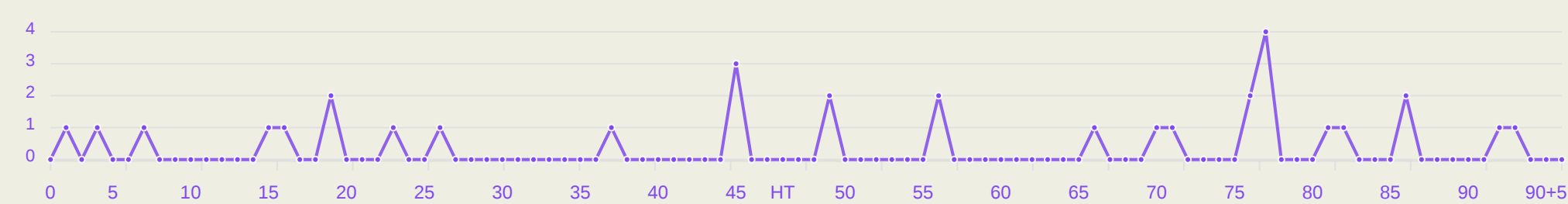
Korea DPR 5 - 1 Japan

Goalkeeping Involvement



Korea DPR

Korea DPR GK Involvement Timeline

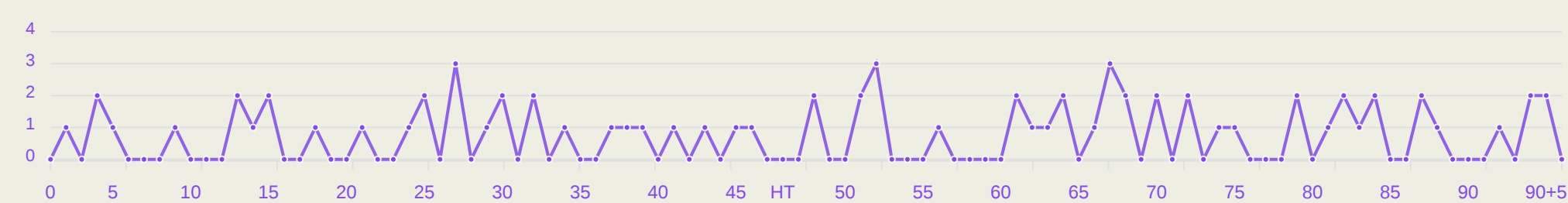


33
Total Involvements



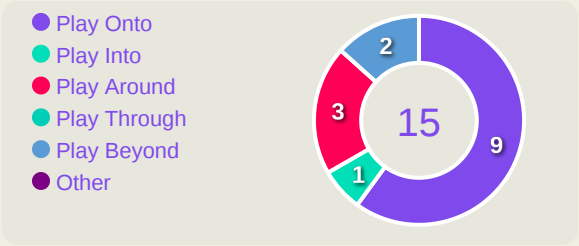
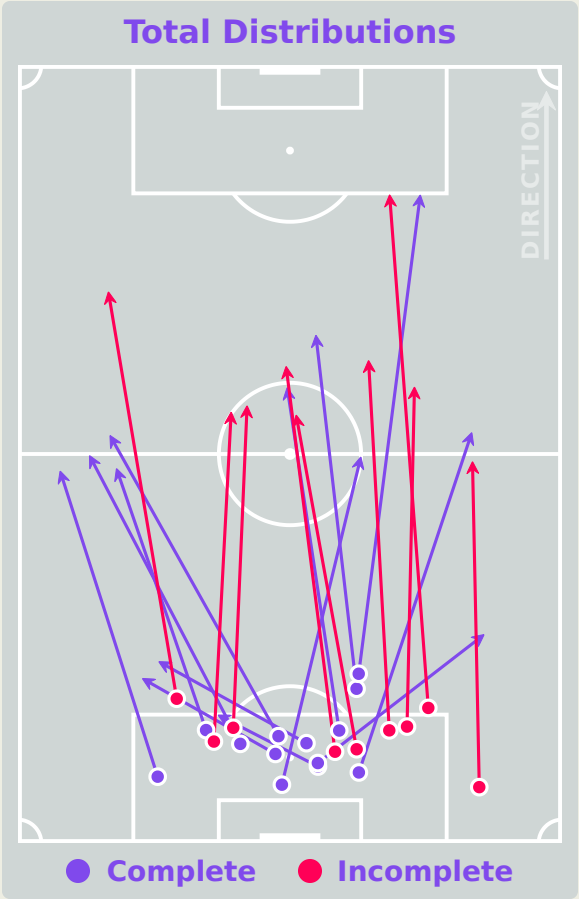
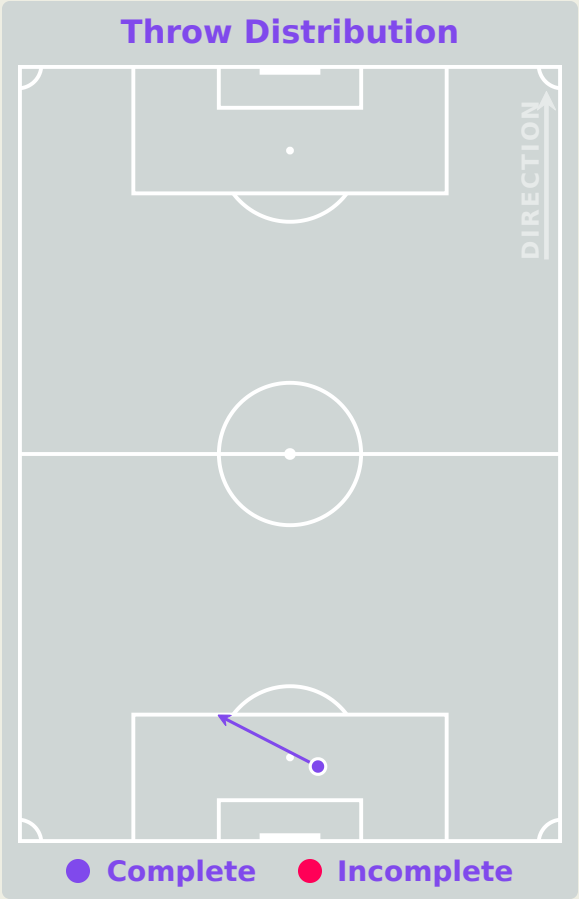
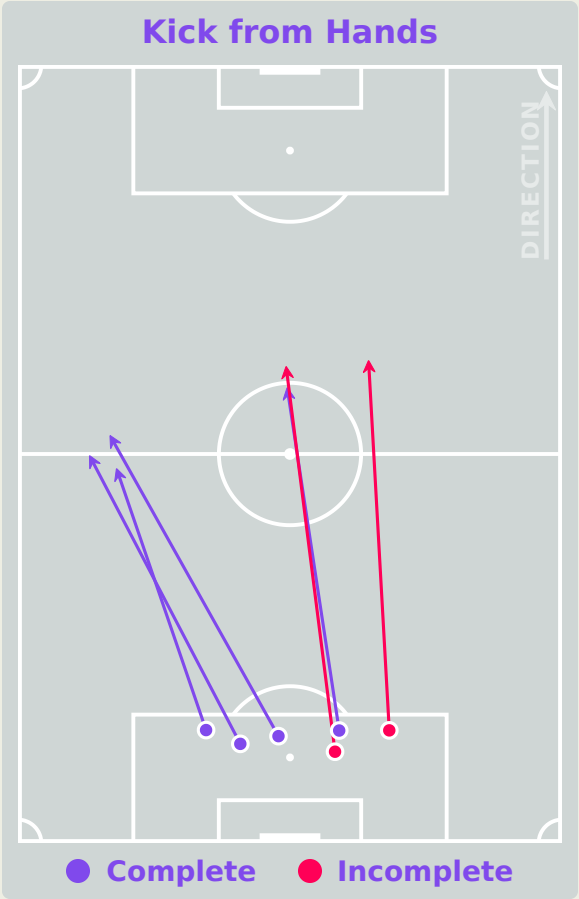
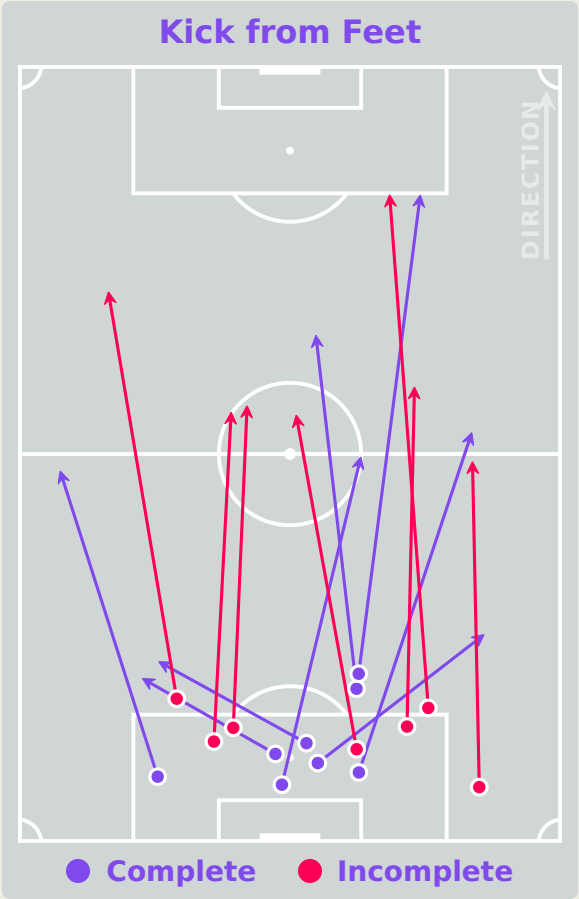
Japan

Japan GK Involvement Timeline



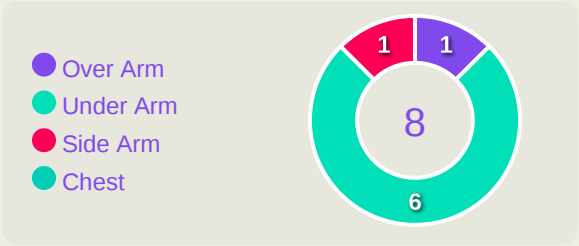
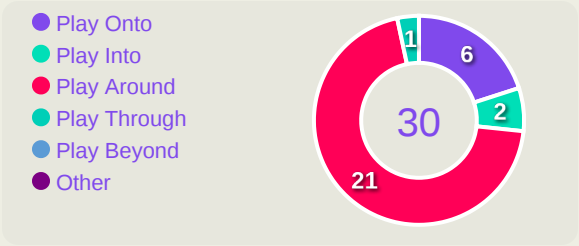
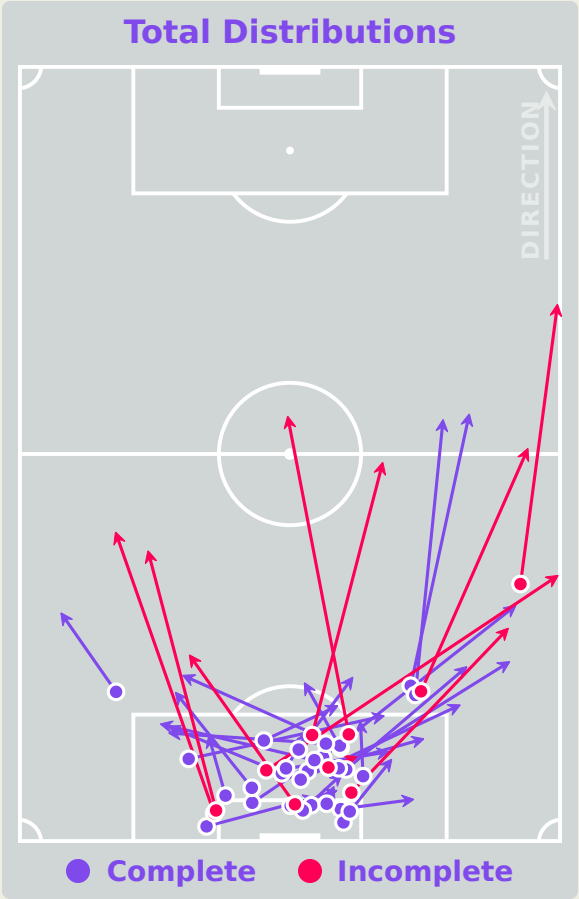
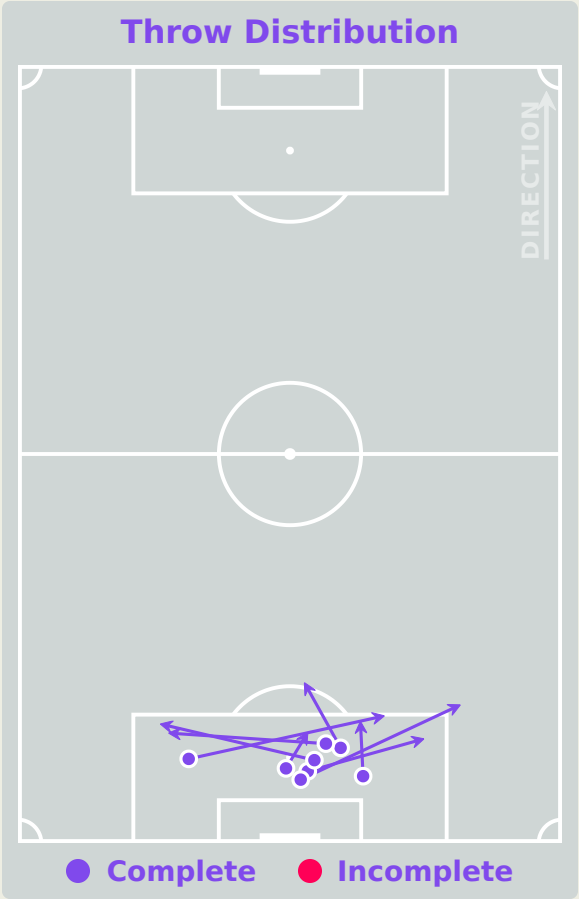
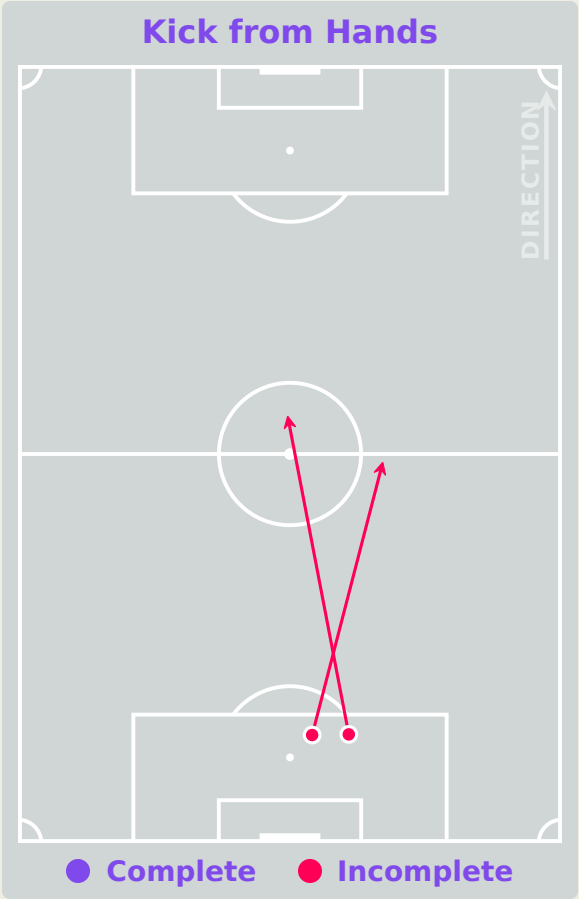
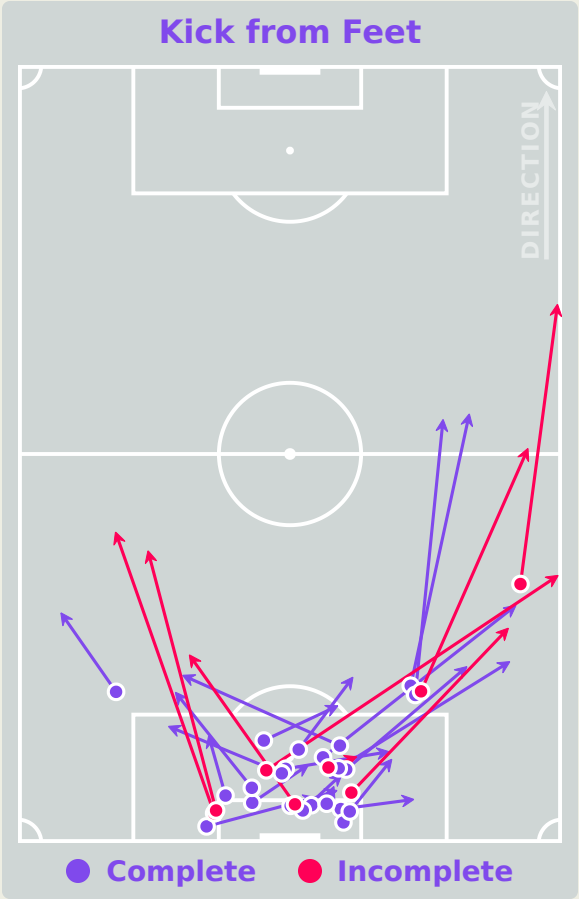
76
Total Involvements

Goalkeeping Distribution

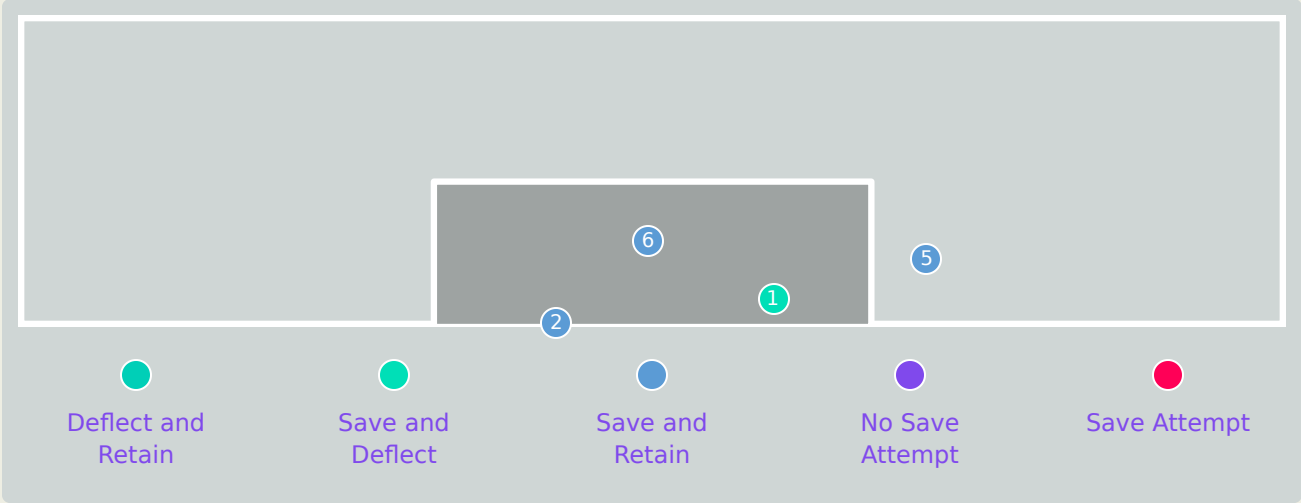
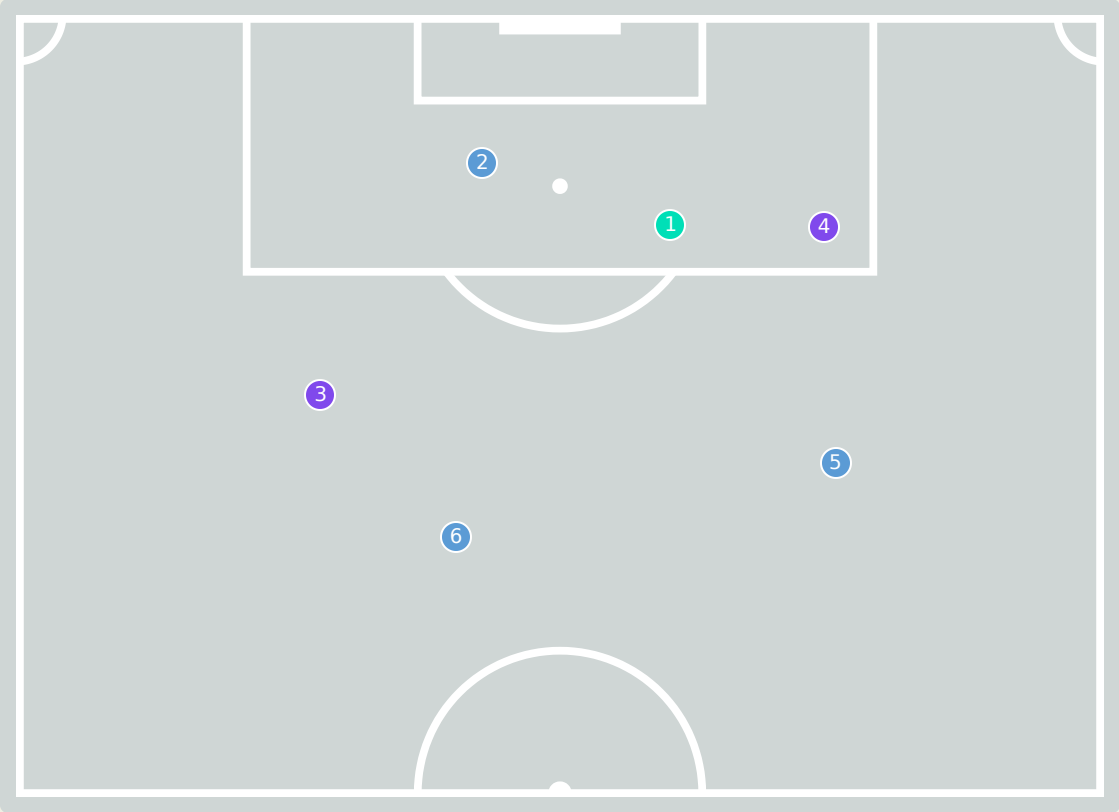


Goalkeeping Distribution

Japan 



Goal Prevention

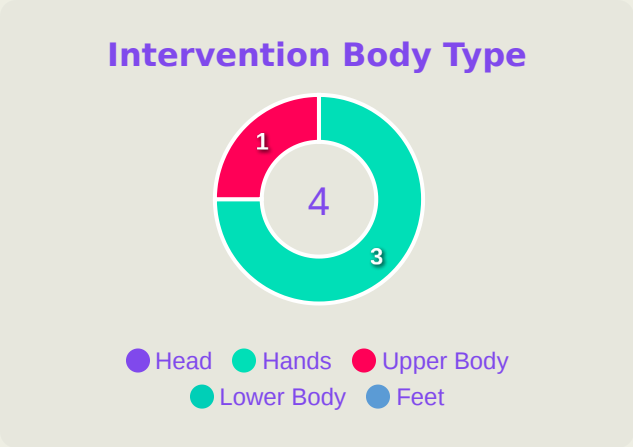
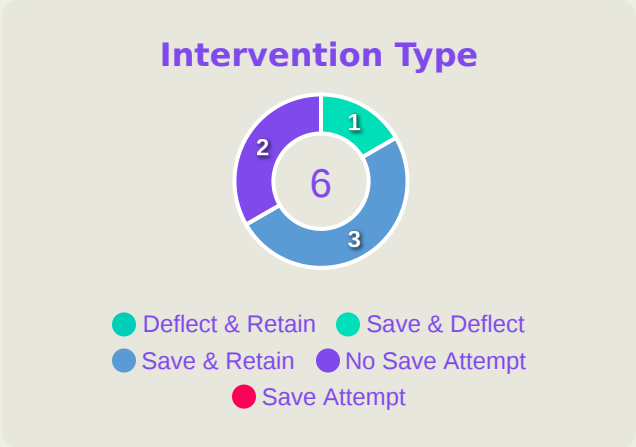


6

Total Attempts on Goal Faced

67

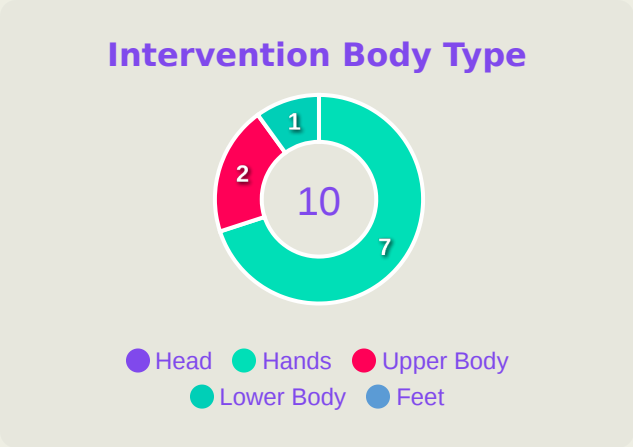
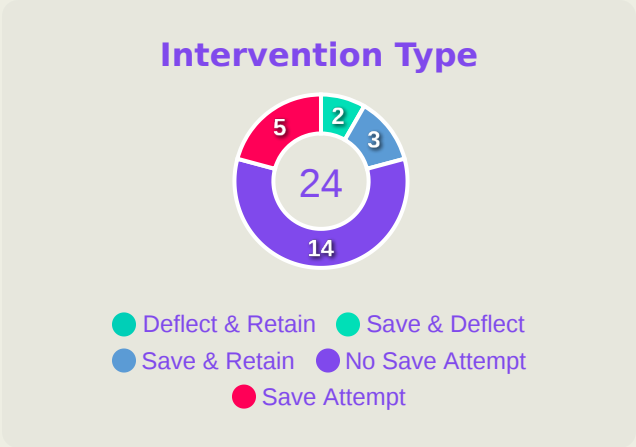
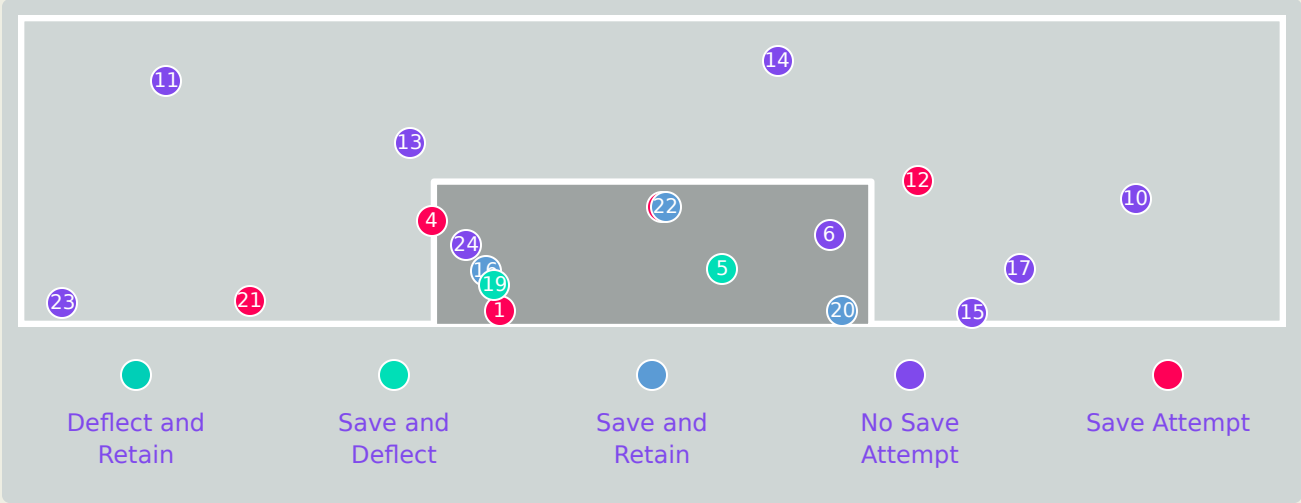
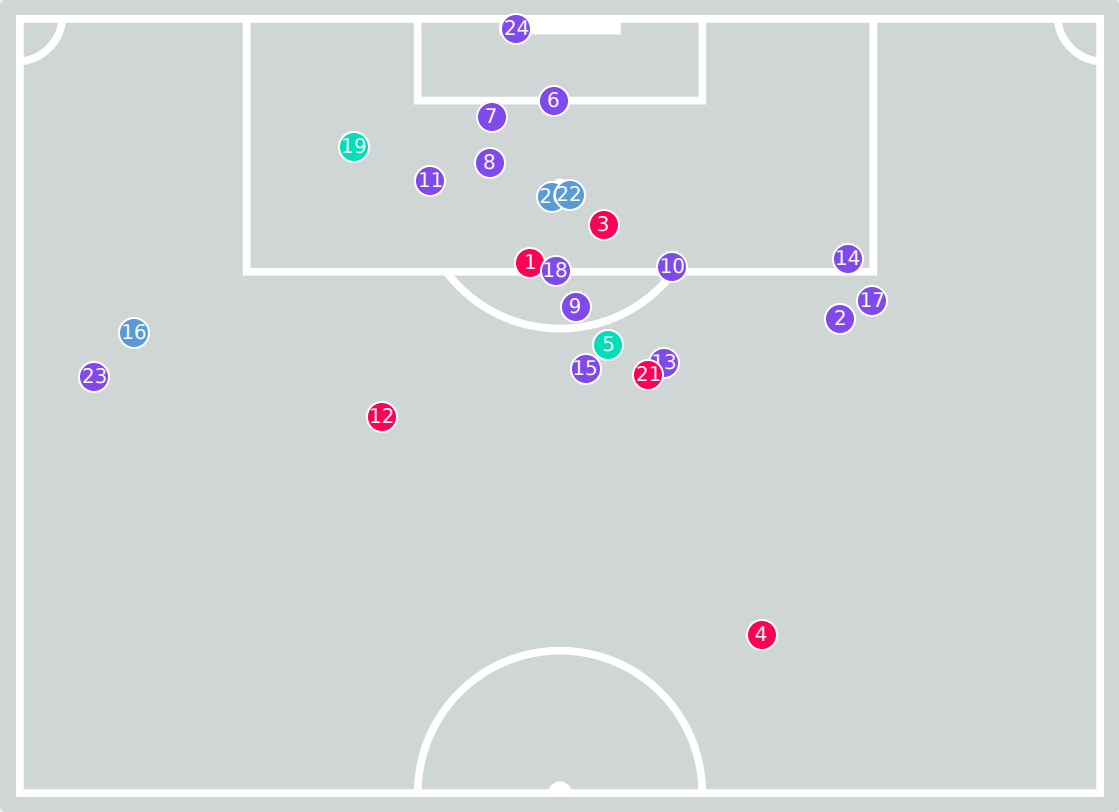
Save %



| Total Attempts on Goal Faced | Total Goal Interventions | Save & Retain | Deflect & Retain | Save & Deflect | Save Attempt | No Save Attempt |
|------------------------------|--------------------------|---------------|------------------|----------------|--------------|-----------------|
| 6 | 4 | 3 | 0 | 1 | 0 | 2 |

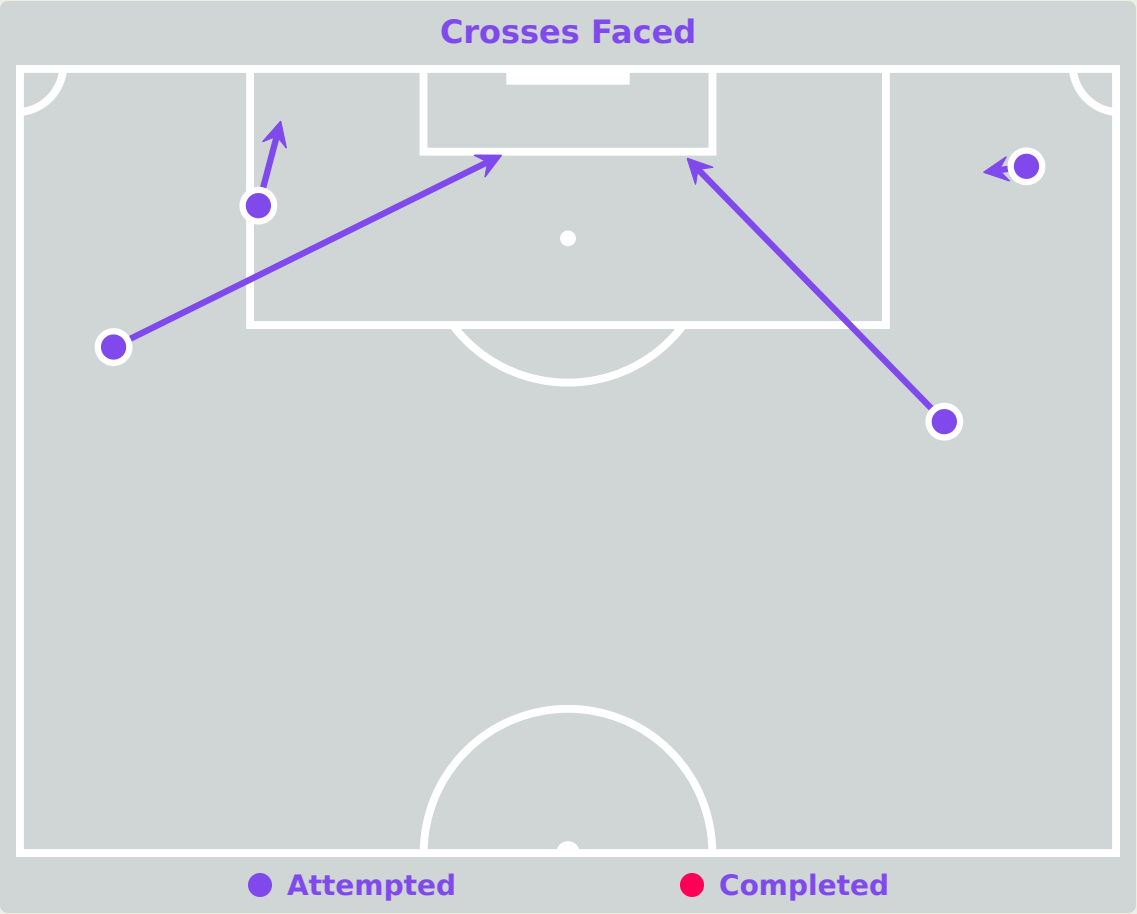
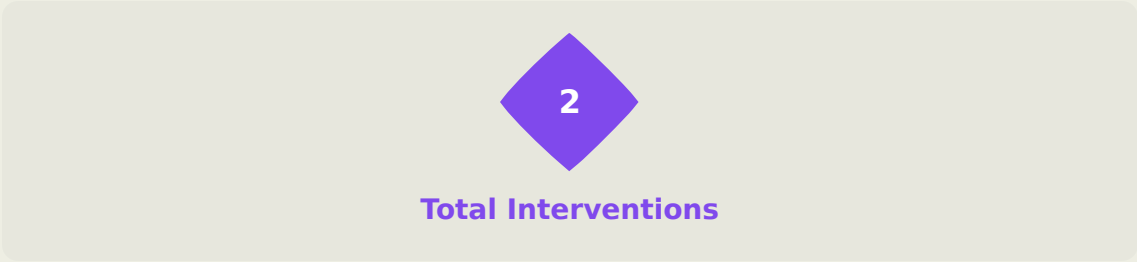
Goal Prevention

Japan



| Total Attempts on Goal Faced | Total Goal Interventions | Save & Retain | Deflect & Retain | Save & Deflect | Save Attempt | No Save Attempt |
|------------------------------|--------------------------|---------------|------------------|----------------|--------------|-----------------|
| 24 | 5 | 3 | 0 | 2 | 5 | 14 |

Aerial Control

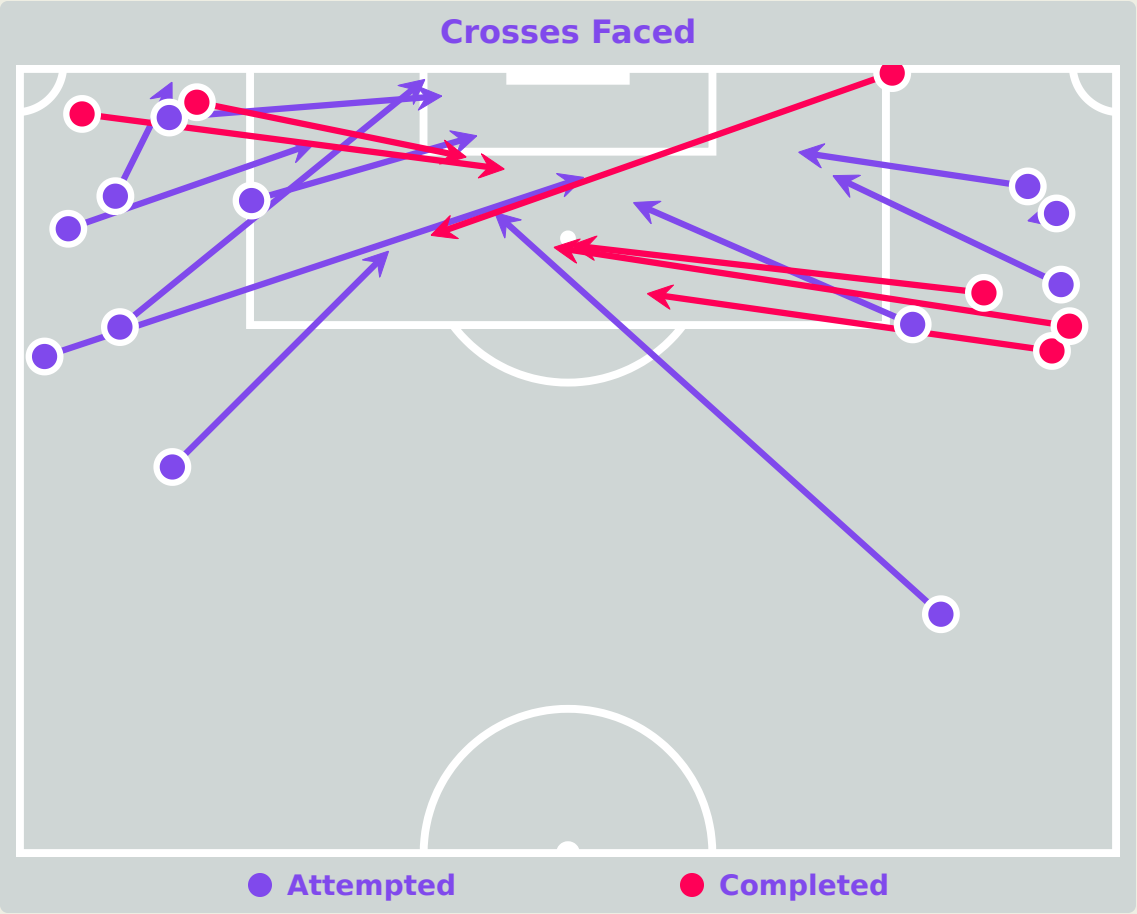
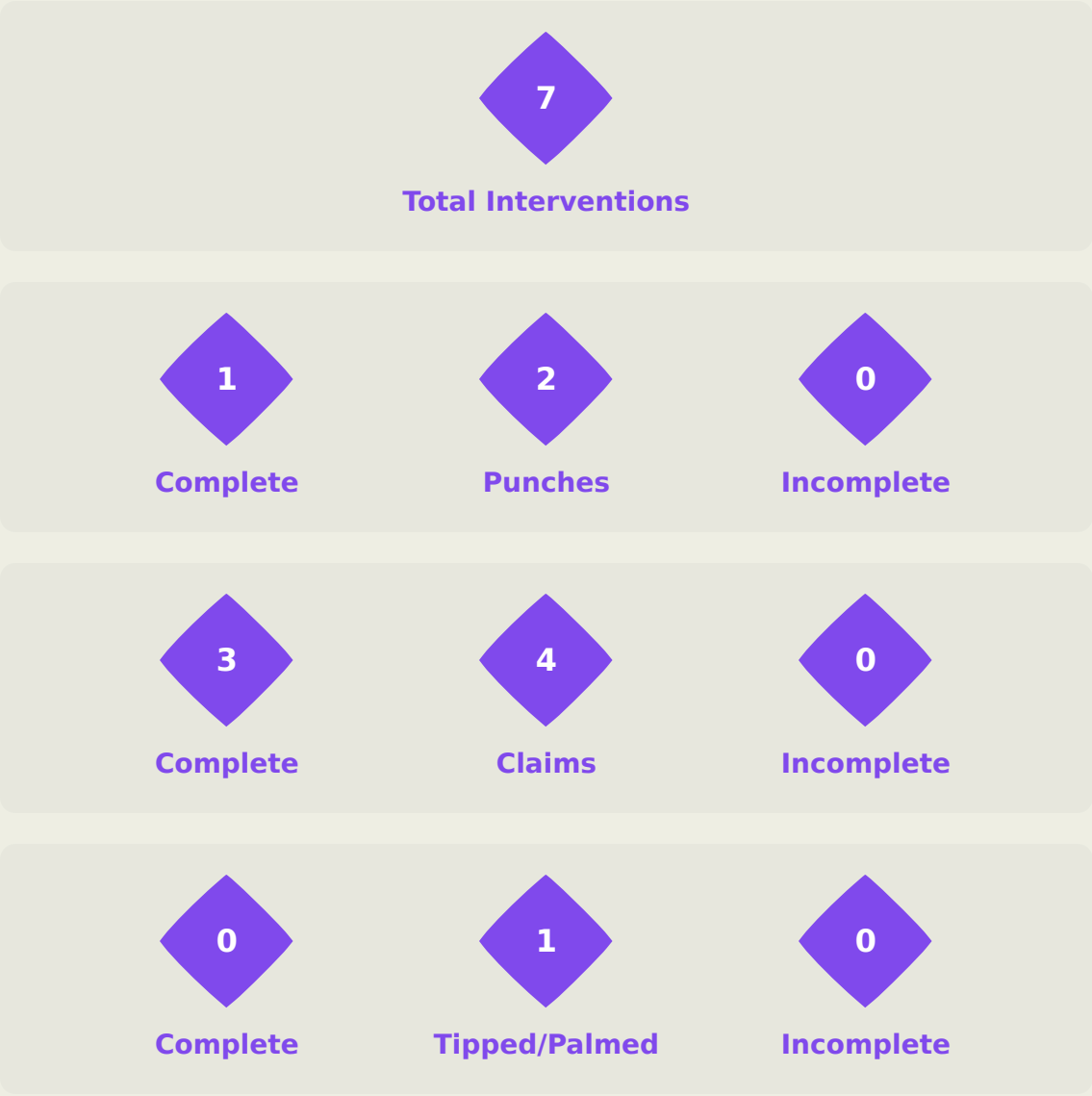


Delivery Types Faced

| Total | In Swing | Out Swing | Driven | Lofted | Cutback | Push |
|-------|----------|-----------|--------|--------|---------|------|
| 5 | 1 | 1 | 0 | 1 | 0 | 2 |

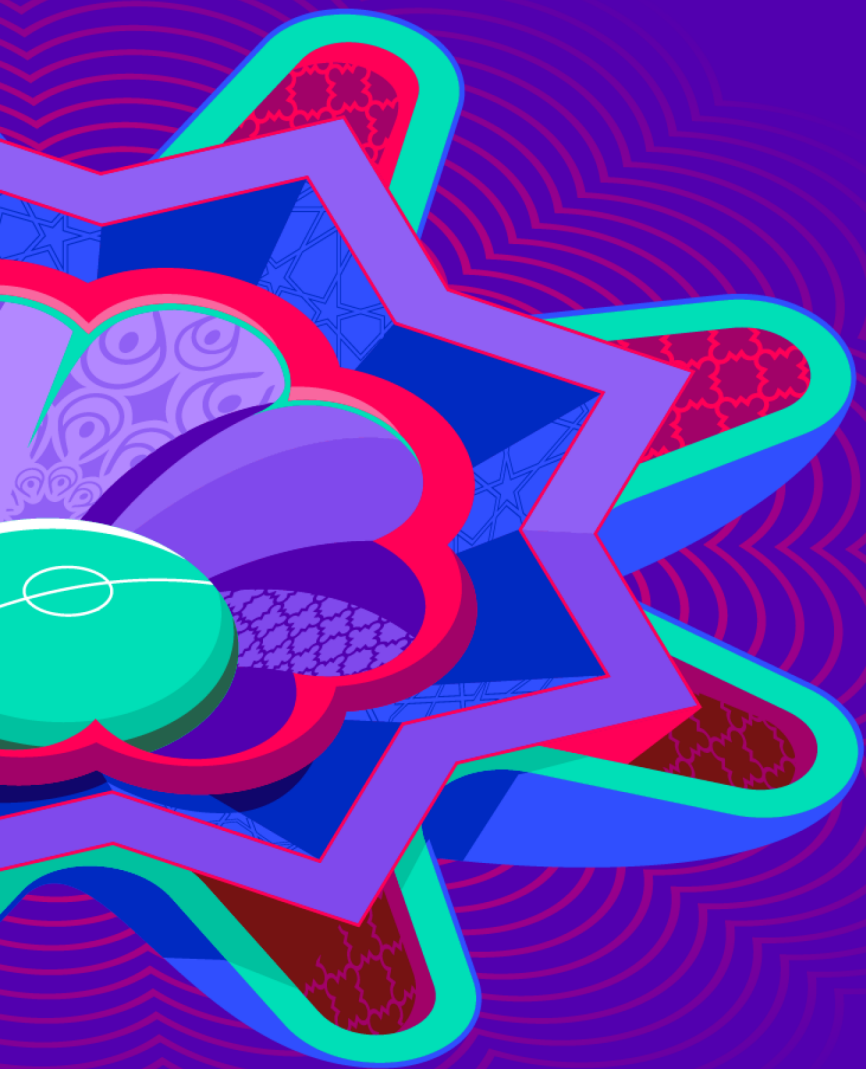
Aerial Control

Japan 



Delivery Types Faced

| Total | In Swing | Out Swing | Driven | Lofted | Cutback | Push |
|-------|----------|-----------|--------|--------|---------|------|
| 24 | 5 | 12 | 2 | 4 | 0 | 1 |



SET PLAYS

Korea DPR 5 - 1 Japan

Set Plays

45

Total Set Plays

6

Total Free Kicks

0

Total Penalties

7

Total Corners

32

Total Throw Ins

| Free Kicks | |
|---------------------|-------|
| Type | Total |
| Direct | 5 |
| Direct (on target) | 0 |
| Direct (off target) | 0 |
| Indirect | 1 |

Korea DPR



| Corners | | | |
|----------------------|----------------|-----------------|-------|
| Delivery Type | From Left Side | From Right Side | Total |
| Direct to Area | 3 | 3 | 6 |
| Short | 1 | 0 | 1 |
| Edge of Penalty Area | 0 | 0 | 0 |

| Corners | |
|----------------|-------|
| Delivery Style | Total |
| Inswing | 3 |
| Outswing | 2 |
| Driven | 0 |
| Lofted | 1 |

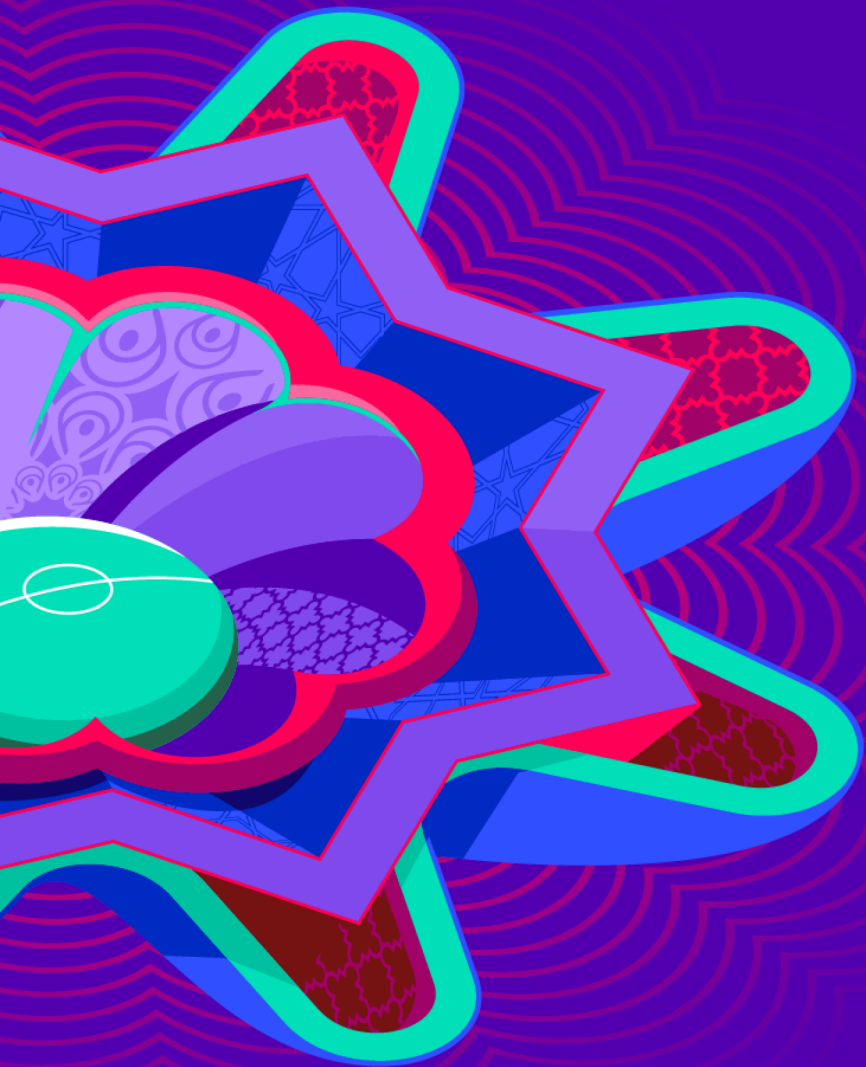
Set Plays



| Free Kicks | |
|---------------------|-------|
| Type | Total |
| Direct | 11 |
| Direct (on target) | 0 |
| Direct (off target) | 0 |
| Indirect | 3 |

| Corners | | | |
|----------------------|----------------|-----------------|-------|
| Delivery Type | From Left Side | From Right Side | Total |
| Direct to Area | 1 | 0 | 1 |
| Short | 0 | 0 | 0 |
| Edge of Penalty Area | 0 | 0 | 0 |

| Corners | |
|----------------|-------|
| Delivery Style | Total |
| Inswing | 1 |
| Outswing | 0 |
| Driven | 0 |
| Lofted | 0 |



INDIVIDUAL DATA IN POSSESSION

Korea DPR 5 - 1 Japan

In Possession - Distributions

Korea DPR



| # | Player | Passes Attempted | Passes Completed | Pass Completion % | Switches of Play | Crosses Attempted | Crosses Completed | Line Breaks Attempted | Line Breaks Completed | Line Break Completion % | Ball Progressions | Take Ons | Step Ins | Attempts at Goal | Goals |
|----|---------------|------------------|------------------|-------------------|------------------|-------------------|-------------------|-----------------------|-----------------------|-------------------------|-------------------|----------|----------|------------------|-------|
| 1 | KIM Son Gyong | 22 | 13 | 59% | 0 | 0 | 0 | 17 | 9 | 53% | 0 | 0 | 0 | 0 | 0 |
| 2 | YUN Jin A | 45 | 29 | 64% | 0 | 5 | 1 | 19 | 8 | 42% | 0 | 0 | 0 | 1 | 0 |
| 3 | RI Jin A | 22 | 14 | 64% | 0 | 0 | 0 | 11 | 5 | 45% | 0 | 0 | 0 | 1 | 0 |
| 7 | RI Ui Gyong | 33 | 27 | 82% | 0 | 5 | 1 | 19 | 13 | 68% | 5 | 5 | 0 | 5 | 2 |
| 8 | EH Chong Gum | 40 | 27 | 68% | 1 | 0 | 0 | 17 | 9 | 53% | 2 | 2 | 0 | 4 | 0 |
| 9 | RI Kyong Im | 39 | 24 | 62% | 1 | 1 | 0 | 18 | 6 | 33% | 2 | 2 | 0 | 0 | 0 |
| 10 | YU Jong Hyang | 31 | 22 | 71% | 0 | 1 | 1 | 5 | 2 | 40% | 0 | 0 | 0 | 7 | 1 |
| 11 | PAK Rye Yong | 20 | 13 | 65% | 0 | 3 | 1 | 5 | 3 | 60% | 1 | 1 | 0 | 1 | 0 |
| 12 | RYU Jin Ju | 24 | 19 | 79% | 0 | 0 | 0 | 9 | 7 | 78% | 0 | 0 | 0 | 1 | 0 |
| 15 | KIM Won Sim | 36 | 29 | 81% | 0 | 2 | 1 | 6 | 5 | 83% | 4 | 4 | 0 | 3 | 2 |
| 17 | KIM Su Rim | 38 | 31 | 82% | 0 | 6 | 3 | 16 | 14 | 88% | 1 | 1 | 0 | 0 | 0 |
| 6 | PAK Su Rim | 0 | 0 | 0% | 0 | 0 | 0 | 0 | 0 | 0% | 0 | 0 | 0 | 0 | 0 |
| 16 | RI Ye Rim | 2 | 2 | 100% | 0 | 1 | 0 | 0 | 0 | 0% | 1 | 1 | 0 | 1 | 0 |
| 20 | PAEK So Hyang | 3 | 1 | 33% | 0 | 0 | 0 | 1 | 0 | 0% | 2 | 2 | 0 | 0 | 0 |

In Possession - Offers & Receptions



| | | | Offer movement types | | | | | | |
|----|---------------|--------------|----------------------|------------|-----------|-----------|-----------|-------------|-----------------|
| # | Player | Total Offers | In Front | In Between | Out to In | In to Out | In Behind | No Movement | Offers Received |
| 1 | KIM Son Gyong | 1 | 0 | 0 | 0 | 0 | 0 | 1 | 1 |
| 2 | YUN Jin A | 21 | 7 | 1 | 0 | 0 | 0 | 13 | 9 |
| 3 | RI Jin A | 5 | 1 | 0 | 0 | 0 | 0 | 4 | 1 |
| 7 | RI Ui Gyong | 49 | 4 | 9 | 3 | 4 | 14 | 15 | 10 |
| 8 | EH Chong Gum | 34 | 19 | 13 | 1 | 0 | 1 | 0 | 15 |
| 9 | RI Kyong Im | 17 | 9 | 7 | 0 | 0 | 0 | 1 | 7 |
| 10 | YU Jong Hyang | 19 | 0 | 4 | 0 | 0 | 15 | 0 | 7 |
| 11 | PAK Rye Yong | 23 | 1 | 0 | 0 | 0 | 10 | 12 | 5 |
| 12 | RYU Jin Ju | 10 | 1 | 0 | 0 | 0 | 0 | 9 | 6 |
| 15 | KIM Won Sim | 16 | 1 | 4 | 2 | 1 | 8 | 0 | 7 |
| 17 | KIM Su Rim | 13 | 4 | 0 | 0 | 0 | 2 | 7 | 5 |
| 6 | PAK Su Rim | 0 | 0 | 0 | 0 | 0 | 0 | 0 | 0 |
| 16 | RI Ye Rim | 3 | 0 | 2 | 0 | 0 | 1 | 0 | 1 |
| 20 | PAEK So Hyang | 3 | 0 | 1 | 0 | 0 | 2 | 0 | 1 |

In Possession - Distributions

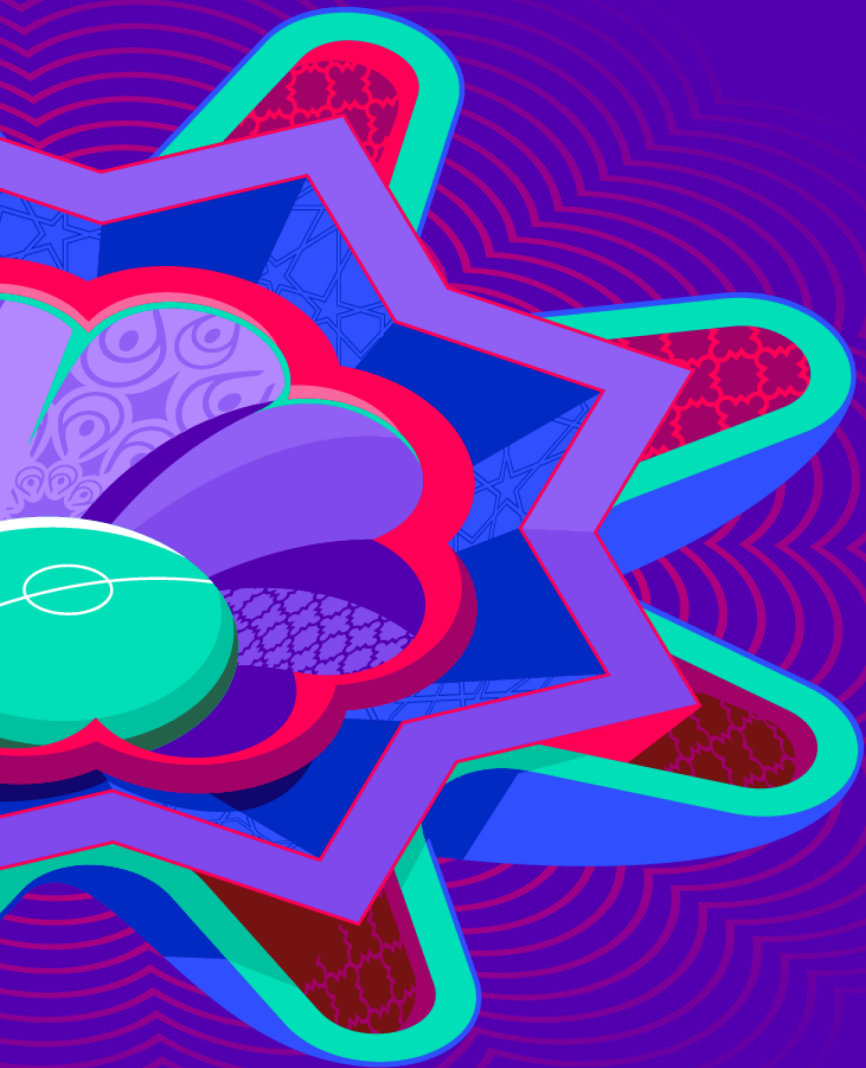


| # | Player | Passes Attempted | Passes Completed | Pass Completion % | Switches of Play | Crosses Attempted | Crosses Completed | Line Breaks Attempted | Line Breaks Completed | Line Break Completion % | Ball Progressions | Take Ons | Step Ins | Attempts at Goal | Goals |
|----|-----------------|------------------|------------------|-------------------|------------------|-------------------|-------------------|-----------------------|-----------------------|-------------------------|-------------------|----------|----------|------------------|-------|
| 12 | Rena YAMAUCHI | 40 | 30 | 75% | 0 | 0 | 0 | 9 | 4 | 44% | 0 | 0 | 0 | 0 | 0 |
| 3 | Yuna AOKI | 84 | 61 | 73% | 0 | 0 | 0 | 37 | 16 | 43% | 0 | 0 | 0 | 0 | 0 |
| 6 | Ema MATSUOKA | 33 | 28 | 85% | 0 | 0 | 0 | 10 | 6 | 60% | 2 | 0 | 2 | 0 | 0 |
| 7 | Honoka SUNAGA | 56 | 42 | 75% | 0 | 0 | 0 | 19 | 10 | 53% | 1 | 1 | 0 | 0 | 0 |
| 8 | Konoha NAKAMURA | 40 | 29 | 72% | 0 | 0 | 0 | 12 | 6 | 50% | 8 | 7 | 1 | 2 | 1 |
| 10 | Noa FUKUSHIMA | 28 | 18 | 64% | 0 | 1 | 0 | 12 | 7 | 58% | 5 | 5 | 0 | 2 | 0 |
| 11 | Yuna TAKAHASHI | 33 | 24 | 73% | 0 | 2 | 0 | 11 | 7 | 64% | 4 | 3 | 1 | 2 | 0 |
| 13 | Ua ONO | 11 | 7 | 64% | 0 | 0 | 0 | 2 | 0 | 0% | 1 | 1 | 0 | 0 | 0 |
| 15 | Niko SHIKIDA | 15 | 13 | 87% | 0 | 1 | 0 | 4 | 1 | 25% | 6 | 6 | 0 | 0 | 0 |
| 16 | Mone SATO | 23 | 11 | 48% | 0 | 0 | 0 | 12 | 4 | 33% | 1 | 1 | 0 | 0 | 0 |
| 17 | Kelly NEREI | 60 | 43 | 72% | 0 | 1 | 0 | 22 | 8 | 36% | 2 | 2 | 0 | 0 | 0 |
| 4 | Momoka SANO | 0 | 0 | 0% | 0 | 0 | 0 | 0 | 0 | 0% | 0 | 0 | 0 | 0 | 0 |
| 5 | Mihiro FURUKAWA | 14 | 10 | 71% | 0 | 0 | 0 | 6 | 4 | 67% | 0 | 0 | 0 | 0 | 0 |
| 9 | Nanami TAIRA | 19 | 13 | 68% | 0 | 0 | 0 | 1 | 1 | 100% | 3 | 3 | 0 | 0 | 0 |
| 19 | Ena KOIZUMI | 8 | 5 | 62% | 0 | 0 | 0 | 4 | 2 | 50% | 1 | 0 | 1 | 0 | 0 |
| 20 | Manami SATO | 4 | 2 | 50% | 0 | 0 | 0 | 1 | 0 | 0% | 1 | 1 | 0 | 0 | 0 |

In Possession - Offers & Receptions



| | | | Offer movement types | | | | | | |
|----|-----------------|--------------|----------------------|------------|-----------|-----------|-----------|-------------|-----------------|
| # | Player | Total Offers | In Front | In Between | Out to In | In to Out | In Behind | No Movement | Offers Received |
| 12 | Rena YAMAUCHI | 3 | 0 | 0 | 0 | 0 | 0 | 3 | 0 |
| 3 | Yuna AOKI | 3 | 1 | 0 | 0 | 0 | 0 | 2 | 1 |
| 6 | Ema MATSUOKA | 14 | 7 | 0 | 1 | 0 | 0 | 6 | 8 |
| 7 | Honoka SUNAGA | 14 | 10 | 3 | 0 | 0 | 0 | 1 | 13 |
| 8 | Konoha NAKAMURA | 30 | 9 | 13 | 1 | 2 | 2 | 3 | 15 |
| 10 | Noa FUKUSHIMA | 57 | 11 | 29 | 2 | 0 | 10 | 5 | 19 |
| 11 | Yuna TAKAHASHI | 30 | 3 | 5 | 5 | 1 | 10 | 6 | 12 |
| 13 | Ua ONO | 13 | 0 | 6 | 0 | 1 | 6 | 0 | 2 |
| 15 | Niko SHIKIDA | 13 | 2 | 0 | 0 | 0 | 8 | 3 | 4 |
| 16 | Mone SATO | 14 | 5 | 0 | 1 | 0 | 1 | 7 | 3 |
| 17 | Kelly NEREI | 28 | 9 | 0 | 0 | 0 | 2 | 17 | 12 |
| 4 | Momoka SANO | 0 | 0 | 0 | 0 | 0 | 0 | 0 | 0 |
| 5 | Mihiro FURUKAWA | 9 | 3 | 0 | 0 | 0 | 2 | 4 | 3 |
| 9 | Nanami TAIRA | 22 | 0 | 14 | 0 | 1 | 7 | 0 | 7 |
| 19 | Ena KOIZUMI | 3 | 0 | 1 | 0 | 0 | 0 | 2 | 0 |
| 20 | Manami SATO | 23 | 0 | 3 | 1 | 1 | 17 | 1 | 2 |



INDIVIDUAL DATA OUT OF POSSESSION

Korea DPR 5 - 1 Japan

Out of Possession

Korea DPR

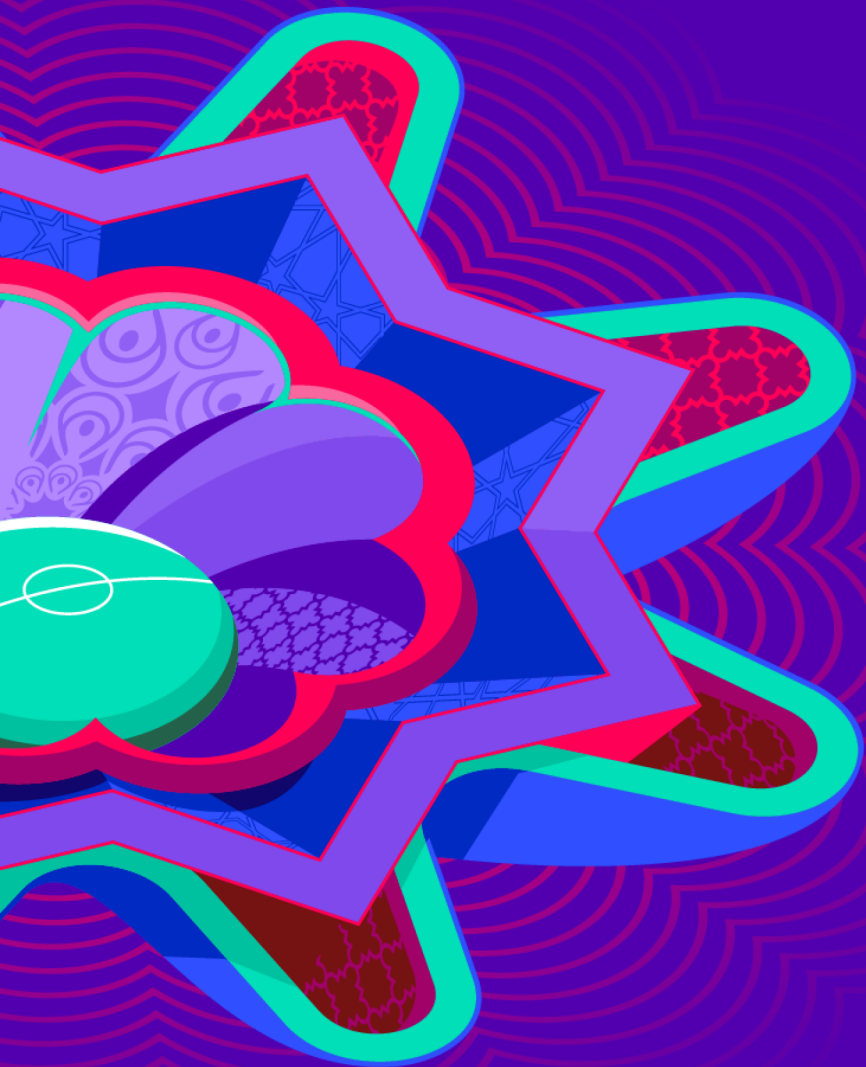


| # | Player | Tackles Made / Won | Blocks | Interceptions | Pressing Direct | Pressing Indirect | Duels Won - Aerial | Duels Won - Physical | Possession Contests won | Clearances | Loose Ball Receptions | Pushing On | Pushing On into Pressing | Possession Regains | Possession Interrupted |
|----|---------------|-----------------------|--------|---------------|--------------------|----------------------|-----------------------|-------------------------|-------------------------------|------------|--------------------------|------------|-----------------------------|-----------------------|---------------------------|
| 1 | KIM Son Gyong | 0 / 0 | 0 | 0 | 0 | 0 | 0 | 0 | 0 | 0 | 6 | 0 | 0 | 12 | 0 |
| 2 | YUN Jin A | 5 / 1 | 2 | 1 | 5 | 6 | 4 | 0 | 4 | 8 | 5 | 17 | 5 | 10 | 2 |
| 3 | RI Jin A | 4 / 1 | 3 | 0 | 3 | 8 | 2 | 0 | 2 | 21 | 8 | 13 | 1 | 11 | 15 |
| 7 | RI Ui Gyong | 4 / 2 | 2 | 1 | 9 | 30 | 3 | 0 | 3 | 1 | 8 | 40 | 25 | 3 | 1 |
| 8 | EH Chong Gum | 4 / 3 | 5 | 0 | 9 | 18 | 2 | 0 | 3 | 2 | 12 | 32 | 8 | 4 | 5 |
| 9 | RI Kyong Im | 4 / 1 | 8 | 1 | 7 | 24 | 1 | 0 | 1 | 2 | 18 | 18 | 8 | 8 | 5 |
| 10 | YU Jong Hyang | 1 / 0 | 1 | 0 | 1 | 25 | 4 | 0 | 4 | 0 | 5 | 26 | 14 | 0 | 0 |
| 11 | PAK Rye Yong | 2 / 2 | 5 | 1 | 3 | 16 | 5 | 0 | 5 | 0 | 7 | 7 | 5 | 6 | 1 |
| 12 | RYU Jin Ju | 3 / 3 | 2 | 3 | 3 | 7 | 4 | 0 | 4 | 16 | 10 | 6 | 0 | 16 | 8 |
| 15 | KIM Won Sim | 1 / 0 | 2 | 0 | 6 | 15 | 0 | 0 | 2 | 0 | 7 | 5 | 1 | 1 | 1 |
| 17 | KIM Su Rim | 2 / 1 | 3 | 1 | 5 | 12 | 0 | 0 | 0 | 9 | 8 | 15 | 4 | 6 | 7 |
| 6 | PAK Su Rim | 0 / 0 | 0 | 0 | 0 | 0 | 1 | 0 | 1 | 0 | 0 | 0 | 0 | 0 | 0 |
| 16 | RI Ye Rim | 0 / 0 | 0 | 0 | 3 | 8 | 0 | 0 | 1 | 0 | 0 | 4 | 3 | 0 | 0 |
| 20 | PAEK So Hyang | 0 / 0 | 0 | 0 | 0 | 2 | 0 | 0 | 0 | 0 | 1 | 2 | 1 | 0 | 0 |

Out of Possession



| # | Player | Tackles Made / Won | Blocks | Interceptions | Pressing Direct | Pressing Indirect | Duels Won - Aerial | Duels Won - Physical | Possession Contests won | Clearances | Loose Ball Receptions | Pushing On | Pushing On into Pressing | Possession Regains | Possession Interrupted |
|----|-----------------|-----------------------|--------|---------------|--------------------|----------------------|-----------------------|-------------------------|-------------------------------|------------|--------------------------|------------|-----------------------------|-----------------------|---------------------------|
| 12 | Rena YAMAUCHI | 0 / 0 | 0 | 0 | 0 | 0 | 0 | 0 | 0 | 1 | 8 | 0 | 0 | 13 | 0 |
| 3 | Yuna AOKI | 2 / 1 | 10 | 2 | 9 | 0 | 3 | 0 | 3 | 12 | 20 | 2 | 1 | 9 | 13 |
| 6 | Ema MATSUOKA | 4 / 1 | 2 | 2 | 6 | 5 | 1 | 0 | 2 | 8 | 2 | 14 | 5 | 7 | 8 |
| 7 | Honoka SUNAGA | 1 / 1 | 1 | 1 | 8 | 8 | 0 | 0 | 1 | 3 | 15 | 1 | 1 | 3 | 3 |
| 8 | Konoha NAKAMURA | 6 / 3 | 4 | 1 | 8 | 16 | 0 | 0 | 0 | 1 | 8 | 19 | 8 | 7 | 3 |
| 10 | Noa FUKUSHIMA | 2 / 0 | 4 | 1 | 6 | 15 | 0 | 0 | 0 | 1 | 2 | 4 | 2 | 2 | 3 |
| 11 | Yuna TAKAHASHI | 3 / 0 | 5 | 0 | 2 | 10 | 0 | 0 | 0 | 1 | 10 | 16 | 7 | 3 | 3 |
| 13 | Ua ONO | 1 / 0 | 1 | 0 | 1 | 14 | 1 | 0 | 1 | 0 | 3 | 11 | 5 | 0 | 2 |
| 15 | Niko SHIKIDA | 1 / 1 | 3 | 0 | 6 | 13 | 1 | 0 | 1 | 3 | 8 | 10 | 4 | 3 | 3 |
| 16 | Mone SATO | 2 / 1 | 3 | 3 | 2 | 9 | 2 | 0 | 2 | 4 | 4 | 10 | 5 | 7 | 3 |
| 17 | Kelly NEREI | 4 / 0 | 3 | 1 | 3 | 11 | 2 | 0 | 2 | 5 | 7 | 16 | 9 | 3 | 5 |
| 4 | Momoka SANO | 0 / 0 | 1 | 0 | 0 | 1 | 0 | 0 | 0 | 0 | 0 | 1 | 1 | 0 | 0 |
| 5 | Mihiro FURUKAWA | 0 / 0 | 1 | 0 | 2 | 4 | 0 | 0 | 0 | 2 | 0 | 3 | 2 | 2 | 1 |
| 9 | Nanami TAIRA | 1 / 1 | 0 | 0 | 2 | 10 | 0 | 0 | 0 | 0 | 2 | 3 | 1 | 1 | 0 |
| 19 | Ena KOIZUMI | 1 / 1 | 1 | 0 | 0 | 3 | 1 | 0 | 1 | 2 | 1 | 4 | 2 | 2 | 2 |
| 20 | Manami SATO | 0 / 0 | 1 | 0 | 0 | 8 | 0 | 0 | 0 | 0 | 2 | 7 | 4 | 0 | 1 |



INDIVIDUAL DATA PHYSICAL

Korea DPR 5 - 1 Japan

Physical Data



CC

| # | Player | Total Distance (m) | Zone 1: 0-7 km/h (m) | Zone 2: 7-13 km/h (m) | Zone 3: 13-19 km/h (m) | Zone 4: 19-23 km/h (m) | Zone 5: 23+ km/h (m) | High Speed Runs (Zone 3) | Sprints (Zone 4 & 5) | Top Speed (km/h) |
|----|---------------|--------------------|----------------------|-----------------------|------------------------|------------------------|----------------------|--------------------------|----------------------|------------------|
| 1 | KIM Son Gyong | 4908.2 | 3380.7 | 1217.4 | 251.2 | 58.9 | 0 | 18.0 | 2.0 | 22.7 |
| 2 | YUN Jin A | 10235.4 | 3729.1 | 4067.9 | 1952.8 | 392.0 | 93.6 | 178.0 | 34.0 | 30.6 |
| 3 | RI Jin A | 9275.9 | 3788.1 | 3602.2 | 1531.1 | 318.2 | 36.3 | 145.0 | 20.0 | 24.2 |
| 7 | RI Ui Gyong | 10395.1 | 3744.8 | 3697.8 | 2386.8 | 529.8 | 35.8 | 217.0 | 38.0 | 26.0 |
| 8 | EH Chong Gum | 10239.8 | 3249.3 | 4109.9 | 2528.1 | 296.5 | 56.0 | 195.0 | 23.0 | 24.4 |
| 9 | RI Kyong Im | 10374.2 | 3329.0 | 4164.0 | 2523.8 | 333.1 | 24.3 | 211.0 | 27.0 | 24.1 |
| 10 | YU Jong Hyang | 8628.3 | 3544.1 | 3165.7 | 1275.0 | 376.1 | 267.4 | 130.0 | 36.0 | 28.3 |
| 11 | PAK Rye Yong | 10838.3 | 3268.0 | 3875.6 | 2553.7 | 827.7 | 313.3 | 245.0 | 64.0 | 27.0 |
| 12 | RYU Jin Ju | 9224.4 | 3748.5 | 3441.9 | 1654.6 | 342.6 | 36.8 | 156.0 | 29.0 | 24.7 |
| 15 | KIM Won Sim | 9436.2 | 2575.3 | 4113.3 | 2086.2 | 550.7 | 110.7 | 206.0 | 42.0 | 26.2 |
| 17 | KIM Su Rim | 10098.6 | 3627.6 | 3954.1 | 2085.3 | 338.8 | 92.8 | 194.0 | 27.0 | 25.8 |
| 6 | PAK Su Rim | 303.6 | 92.3 | 103.7 | 103.0 | 4.5 | 0 | 8.0 | 1.0 | 19.5 |
| 16 | RI Ye Rim | 1859.6 | 591.3 | 717.2 | 334.6 | 141.3 | 75.2 | 33.0 | 10.0 | 27.1 |
| 20 | PAEK So Hyang | 706.7 | 236.6 | 276.0 | 121.7 | 68.2 | 4.1 | 14.0 | 4.0 | 23.4 |

CC

| # | Player | Total Distance (m) | Zone 1: 0-7 km/h (m) | Zone 2: 7-13 km/h (m) | Zone 3: 13-19 km/h (m) | Zone 4: 19-23 km/h (m) | Zone 5: 23+ km/h (m) | High Speed Runs (Zone 3) | Sprints (Zone 4 & 5) | Top Speed (km/h) |
|----|-----------------|--------------------|----------------------|-----------------------|------------------------|------------------------|----------------------|--------------------------|----------------------|------------------|
| 12 | Rena YAMAUCHI | 4960.8 | 3747.5 | 1001.0 | 169.2 | 23.9 | 19.3 | 20.0 | 3.0 | 26.6 |
| 3 | Yuna AOKI | 9306.5 | 3444.1 | 3634.1 | 1567.7 | 451.1 | 209.5 | 161.0 | 41.0 | 27.7 |
| 6 | Ema MATSUOKA | 7182.7 | 2800.9 | 2709.8 | 1254.2 | 317.4 | 100.5 | 136.0 | 23.0 | 26.0 |
| 7 | Honoka SUNAGA | 10227.2 | 3235.3 | 4325.3 | 2474.3 | 192.3 | 0 | 195.0 | 13.0 | 22.1 |
| 8 | Konoha NAKAMURA | 10389.2 | 3374.0 | 4197.8 | 2389.4 | 375.3 | 52.7 | 212.0 | 31.0 | 25.7 |
| 10 | Noa FUKUSHIMA | 9593.8 | 3788.5 | 3382.3 | 2025.3 | 354.6 | 43.2 | 187.0 | 29.0 | 25.4 |
| 11 | Yuna TAKAHASHI | 8271.2 | 3000.6 | 3188.4 | 1658.9 | 322.9 | 100.4 | 137.0 | 26.0 | 26.7 |
| 13 | Ua ONO | 4940.6 | 1581.7 | 2079.1 | 1016.8 | 236.6 | 26.5 | 99.0 | 17.0 | 24.6 |
| 15 | Niko SHIKIDA | 10061.5 | 3488.2 | 3682.8 | 2469.2 | 378.5 | 42.9 | 196.0 | 28.0 | 24.9 |
| 16 | Mone SATO | 6805.1 | 2347.6 | 2374.5 | 1508.5 | 462.0 | 112.5 | 136.0 | 32.0 | 26.0 |
| 17 | Kelly NEREI | 10473.6 | 3417.8 | 4013.8 | 2260.1 | 676.2 | 105.8 | 218.0 | 47.0 | 25.3 |
| 4 | Momoka SANO | 579.8 | 155.6 | 265.9 | 118.7 | 16.5 | 23.2 | 12.0 | 1.0 | 25.9 |
| 5 | Mihiro FURUKAWA | 3700.8 | 1231.6 | 1475.5 | 672.5 | 268.6 | 52.5 | 63.0 | 16.0 | 26.1 |
| 9 | Nanami TAIRA | 4968.5 | 1874.7 | 2003.1 | 990.5 | 91.9 | 8.3 | 89.0 | 9.0 | 23.6 |
| 19 | Ena KOIZUMI | 1957.4 | 653.9 | 776.1 | 361.6 | 131.5 | 34.2 | 34.0 | 9.0 | 25.2 |
| 20 | Manami SATO | 2209.4 | 577.1 | 948.3 | 495.5 | 185.4 | 3.1 | 48.0 | 15.0 | 23.3 |

